

Załącznik 4.

do Raportu o jakości polsko-niemieckich wód granicznych w 2011 r.

3.2.2. Przebieg zmian stężeń wskaźników chemicznych i fizykochemicznych wspierających elementy biologiczne (dyrektywa 2000/60/WE załącznik V) dla Zatok Pomorskiej

Anlage 4.

zum Bericht über die Beschaffenheit der deutsch–polnischen Grenzgewässer 2011

3.2.2. Entwicklung chemischer und physikalisch-chemischer Komponenten in Unterstützung der biologischen Komponenten (RL 2000/60/EG) in der Pommerschen Bucht

Abb.3.2.2.3 / Rys. 3.2.2.3

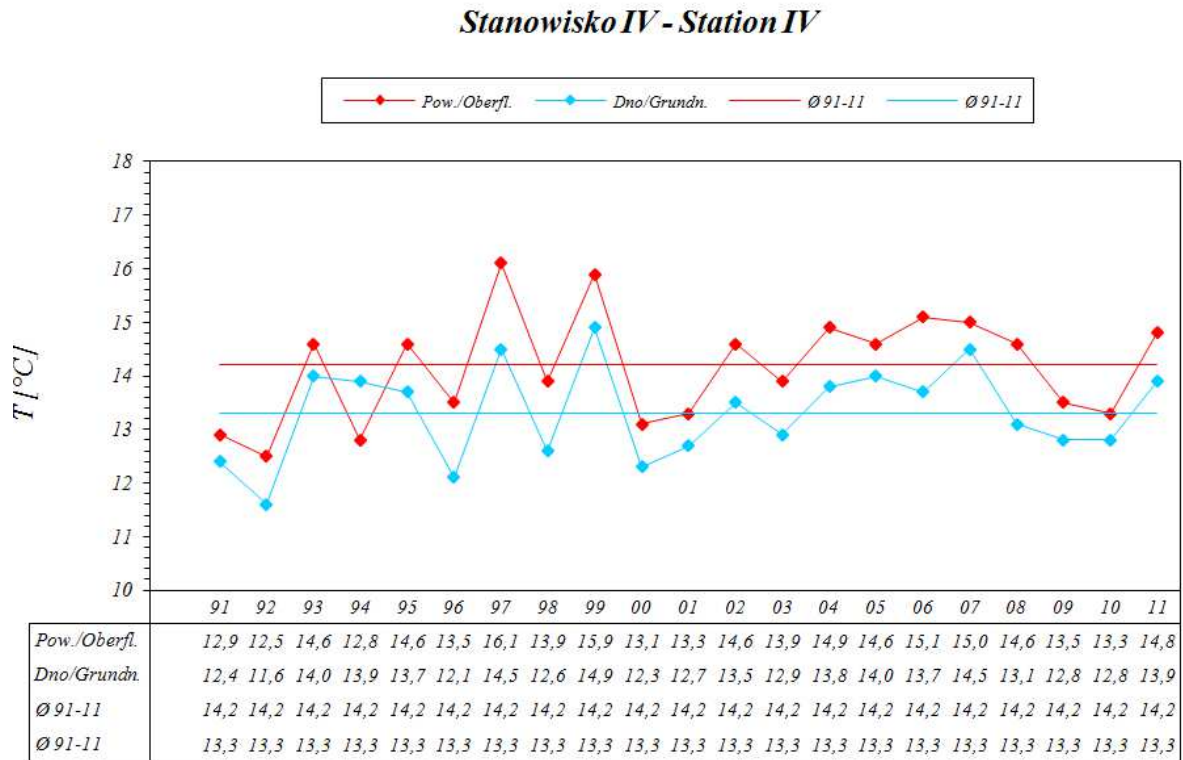
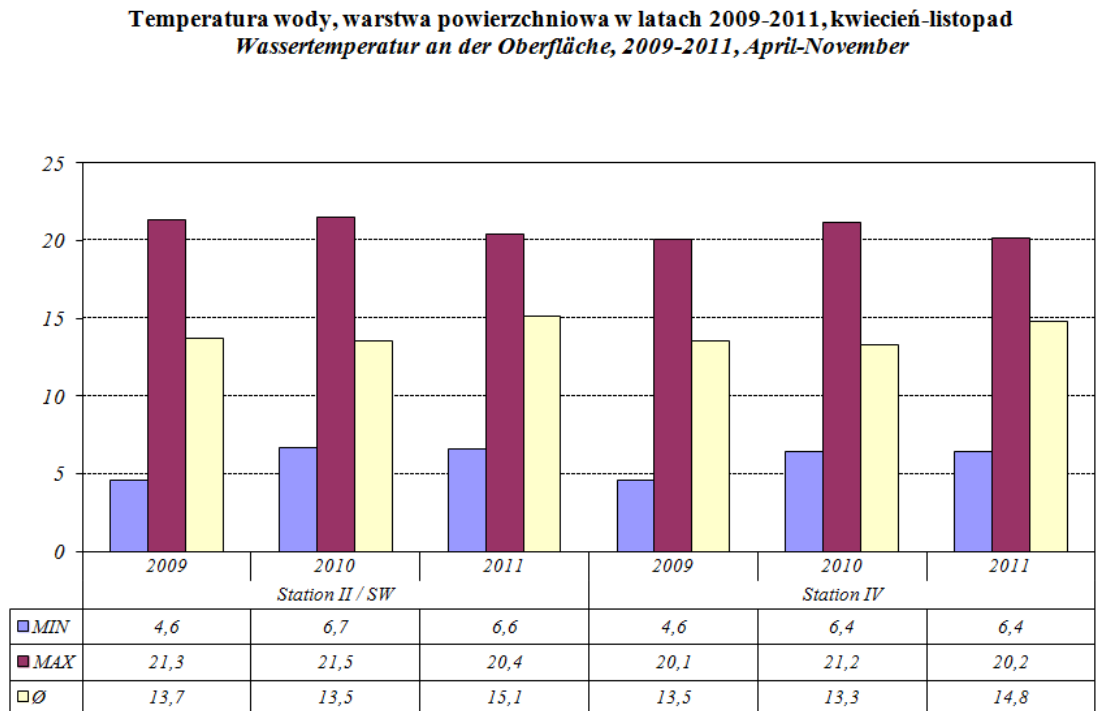


Abb.3.2.2.4 / Rys. 3.2.2.4



Pommersche Bucht - Wassertemperatur / Zatoka Pomorska - Temperatura wody

Abb.3.2.2.5 / Rys. 3.2.2.5

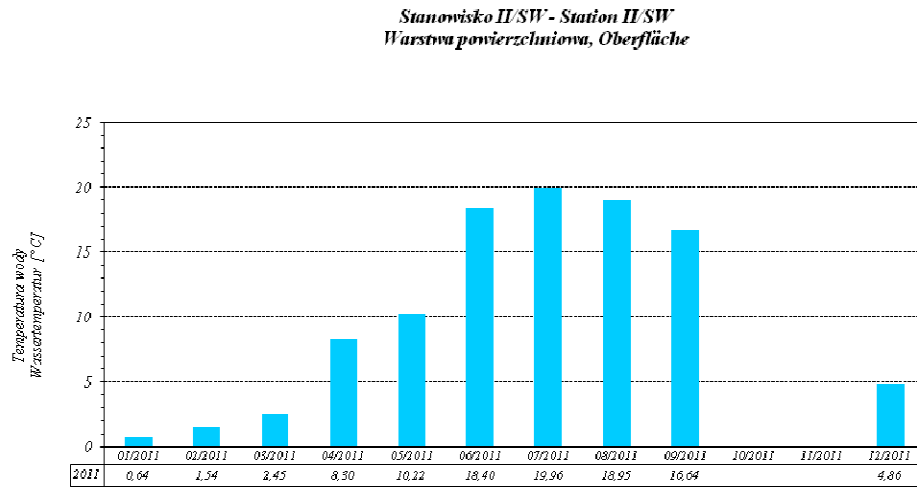


Abb.3.2.2.6 / Rys. 3.2.2.6

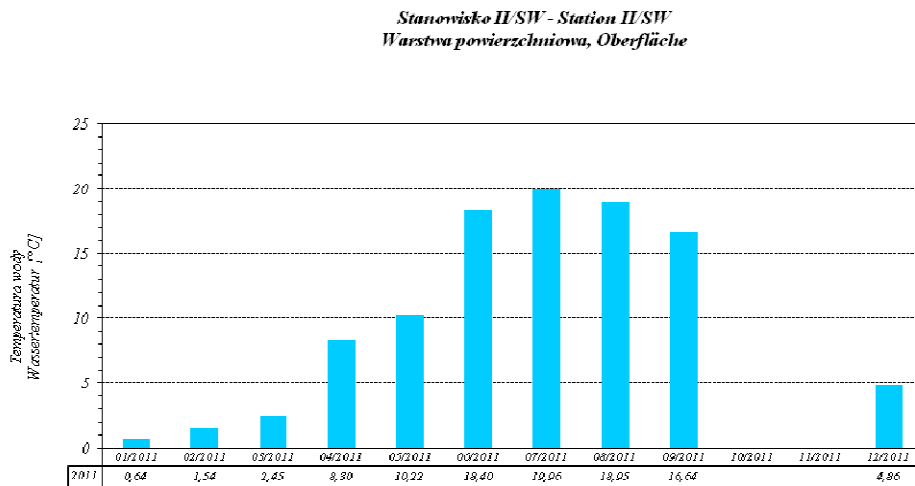


Abb.3.2.2.7 / Rys. 3.2.2.7

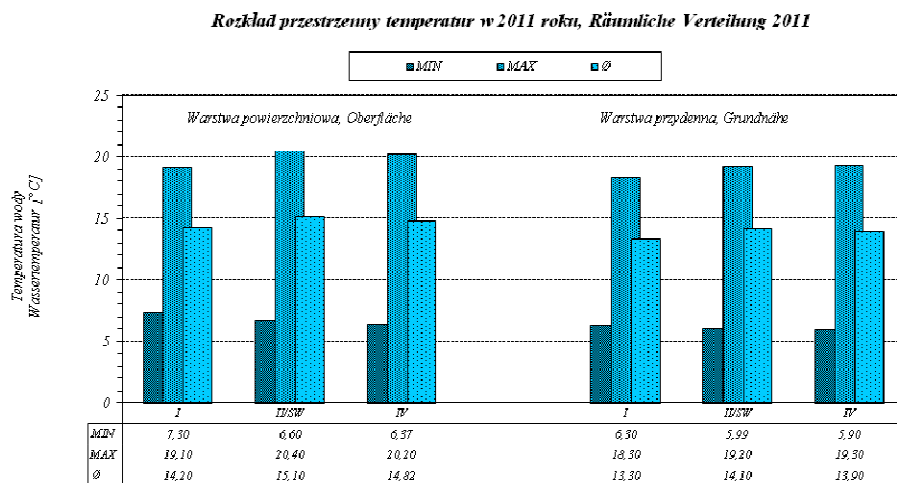


Abb.3.2.2.10 / Rys. 3.2.2.10

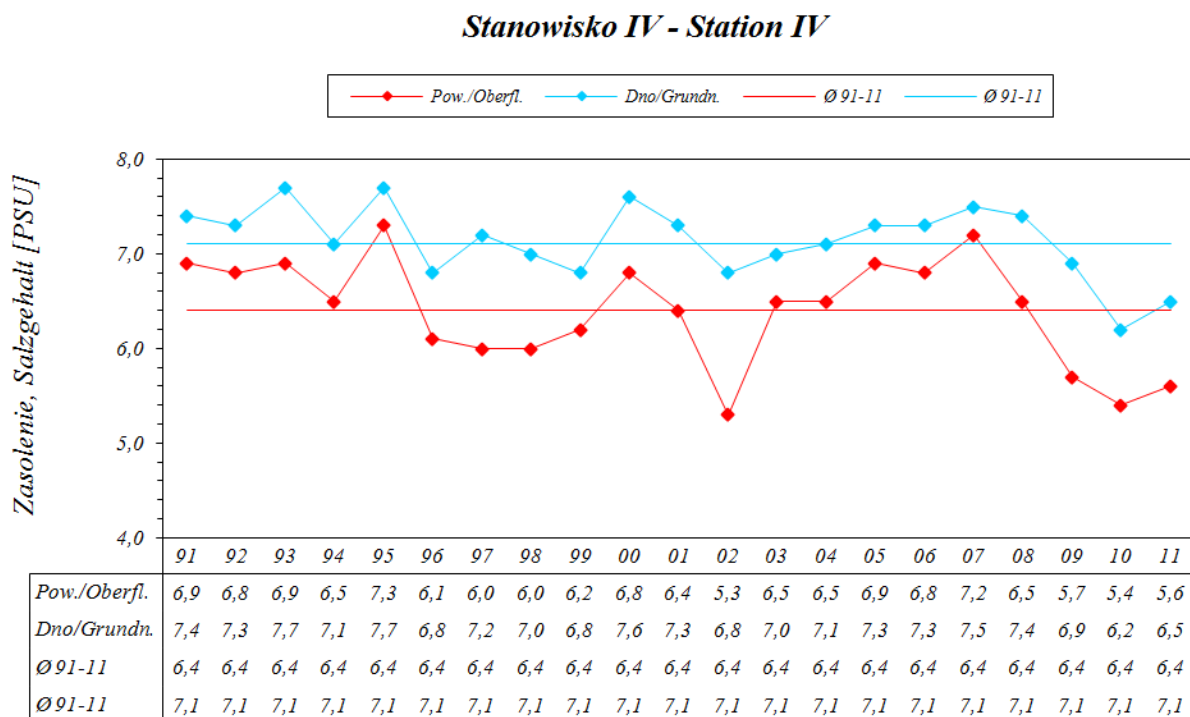
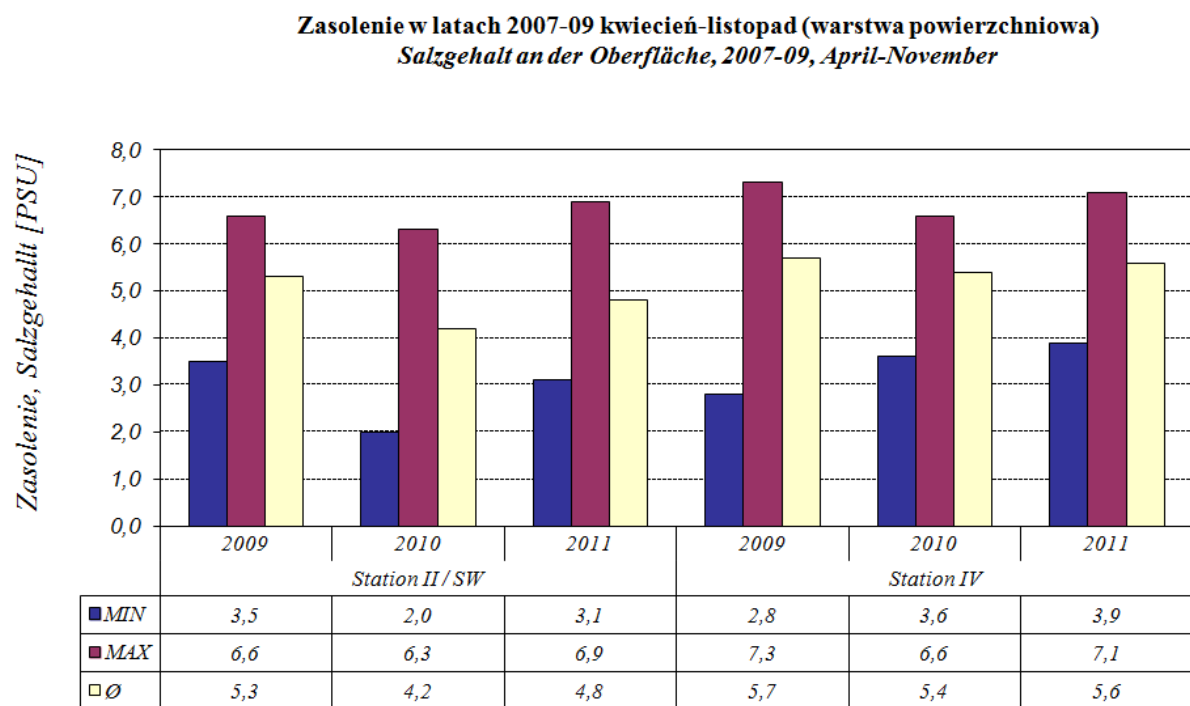


Abb.3.2.2.11 / Rys. 3.2.2.11



Pommersche Bucht - Salzgehalt / Zatoka Pomorska - Zasolenie

Abb.3.2.2.12 / Rys. 3.2.2.12

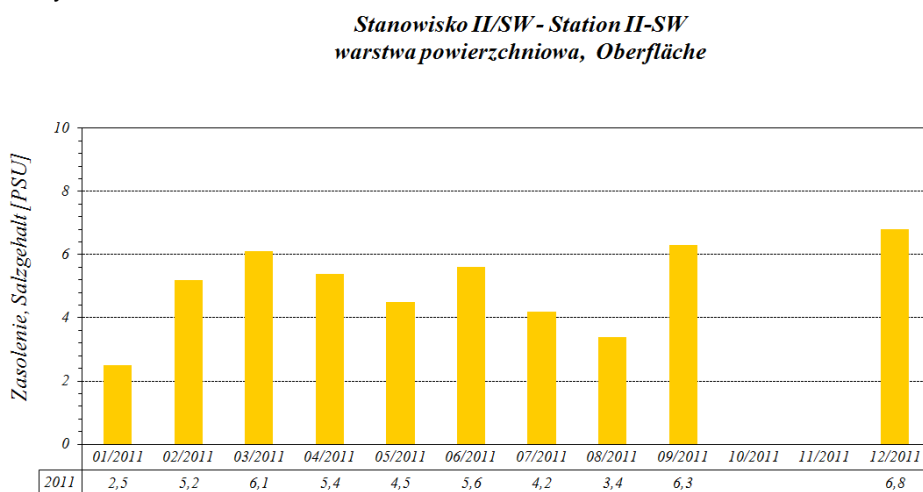


Abb.3.2.2.13 / Rys. 3.2.2.13

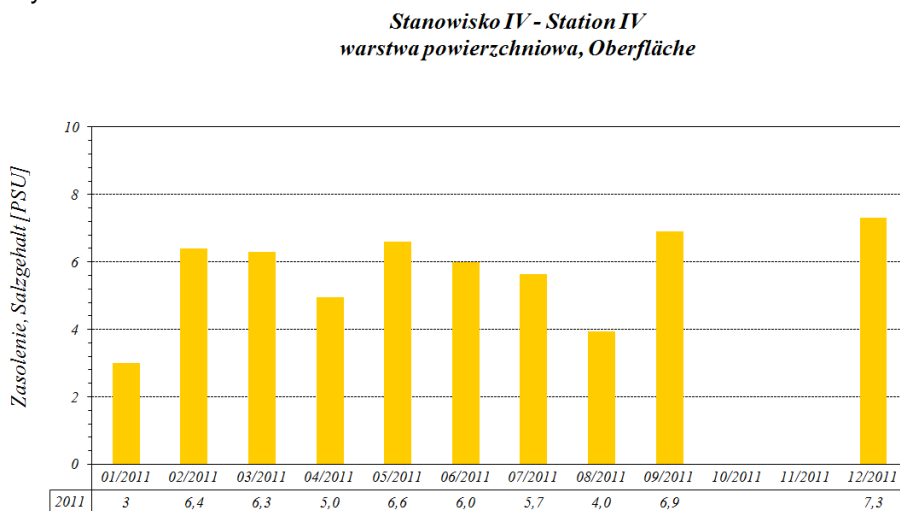
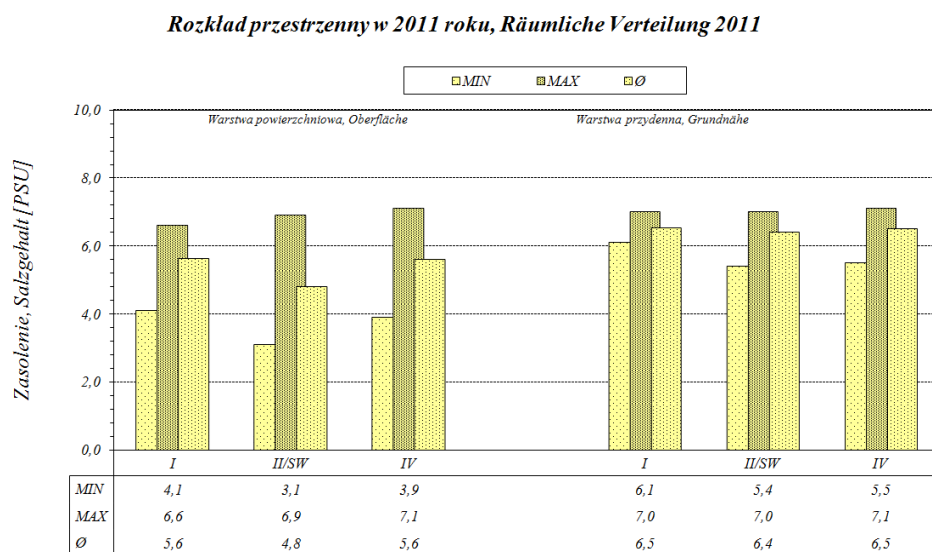


Abb.3.2.2.14 / Rys. 3.2.2.14



Pommersche Bucht - pH Wert / Zatoka Pomorska Odczyn pH

Abb.3.2.2.15 / Rys. 3.2.2.15

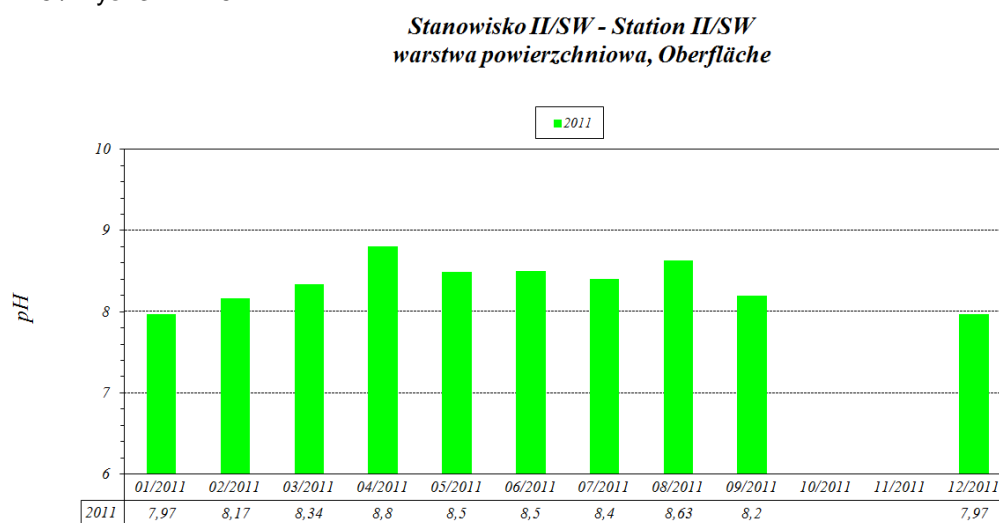


Abb.3.2.2.16 / Rys. 3.2.2.16

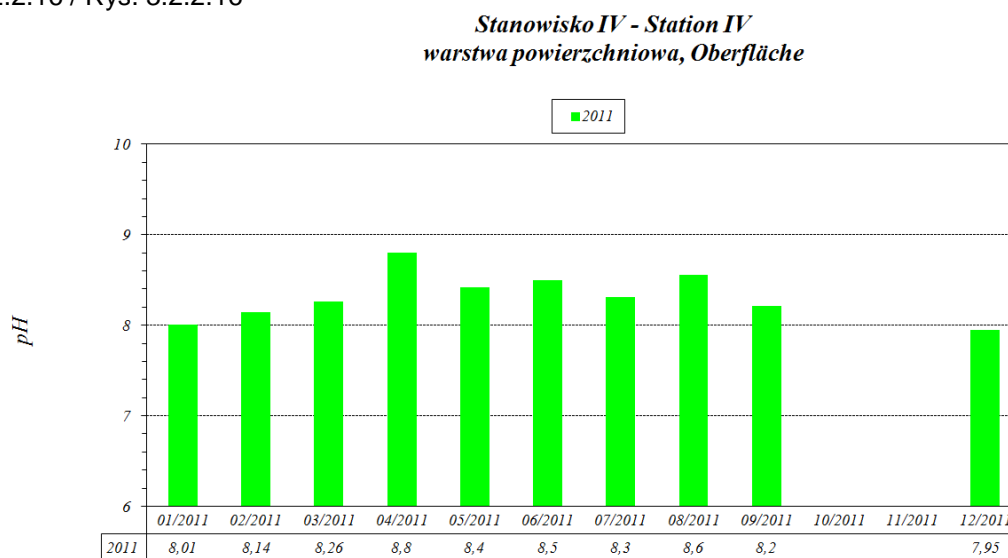


Abb.3.2.2.17 / Rys. 3.2.2.17

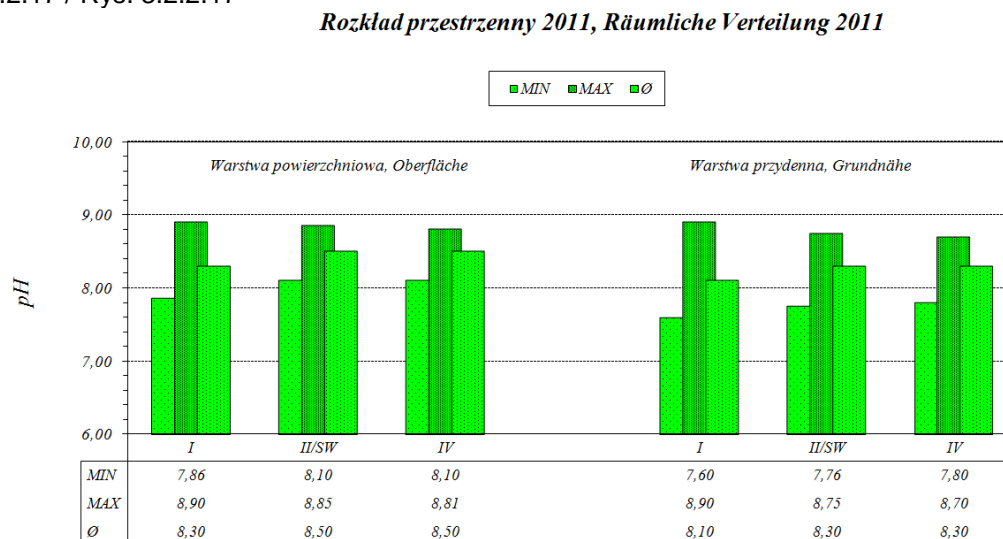


Abb.3.2.2.20 / Rys. 3.2.2.20

Stanowisko IV - Station IV

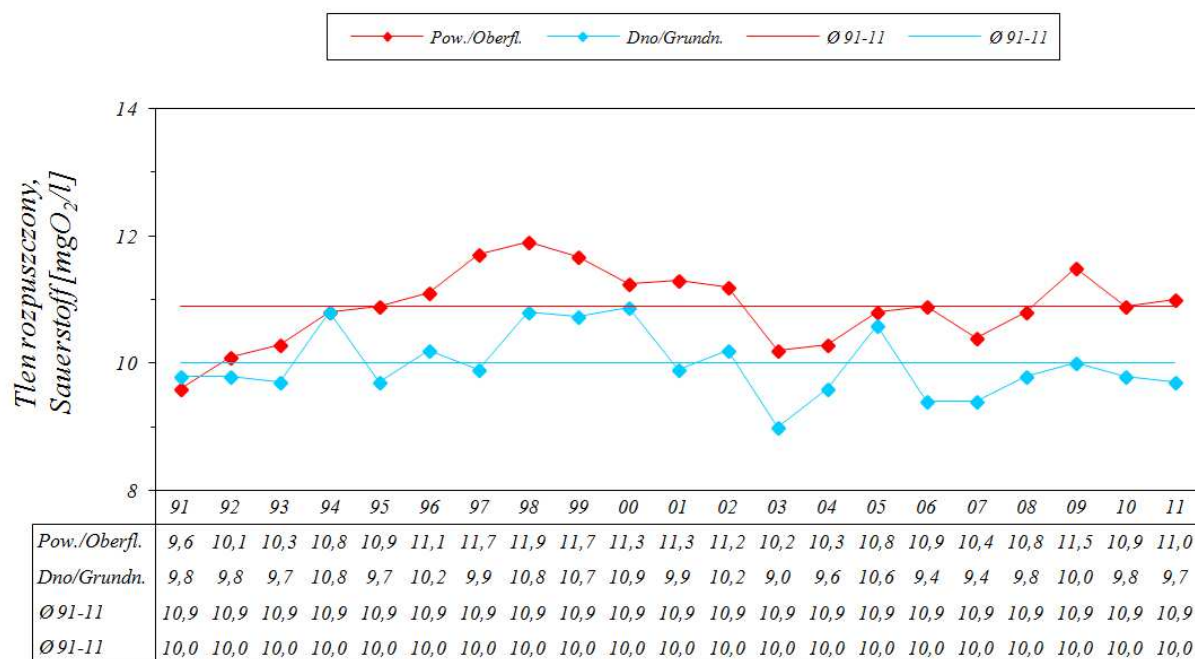
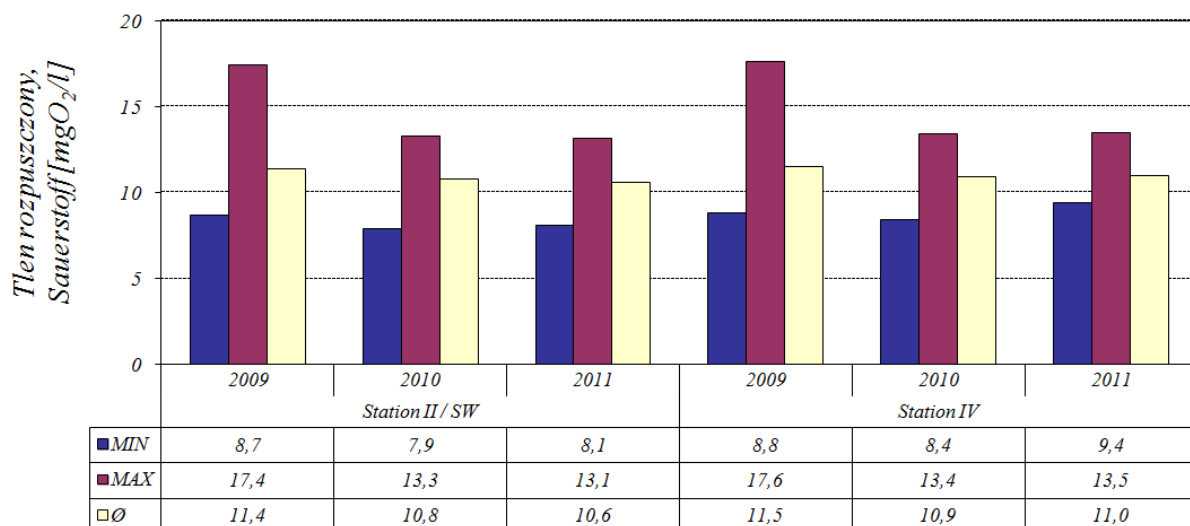


Abb.3.2.2.21 / Rys. 3.2.2.21

**Tlen rozpuszczony w latach 2009-2011 kwiecień-listopad
(warstwa powierzchniowa)
Sauerstoffkonzentration an der Oberfläche, 2009-2011, April-November**



Pommersche Bucht - Sauerstoffgehalt / Zatoka Pomorska - Tlen rozpuszczony

Abb.3.2.2.22 / Rys. 3.2.2.22

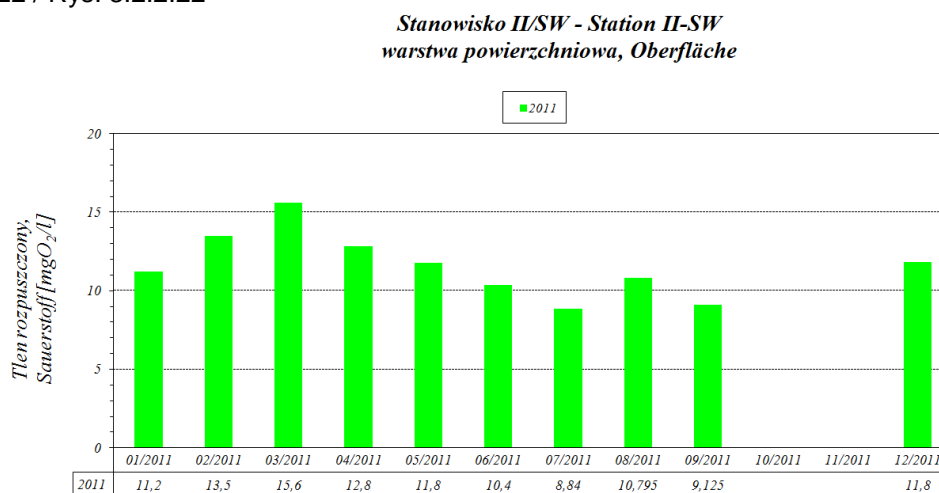


Abb.3.2.2.23 / Rys. 3.2.2.23

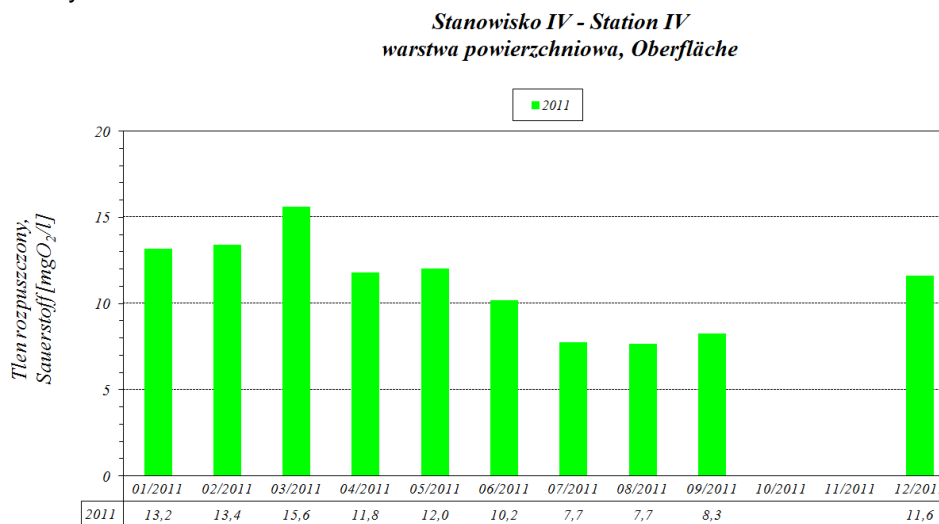
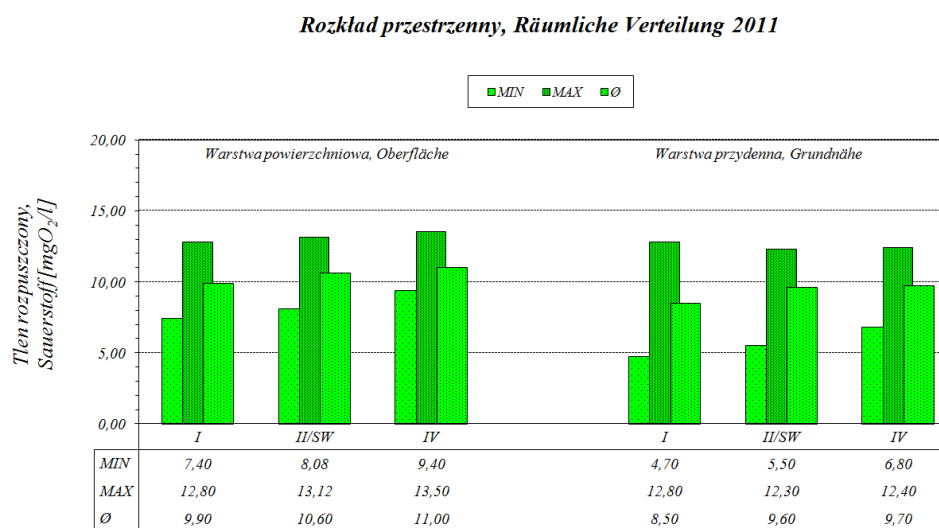


Abb.3.2.2.24 / Rys. 3.2.2.24



Pommersche Bucht - Sauerstoffsättigung / Zatoka Pomorska - Nasylenie tlenem

Abb.3.2.2.25 / Rys. 3.2.2.25

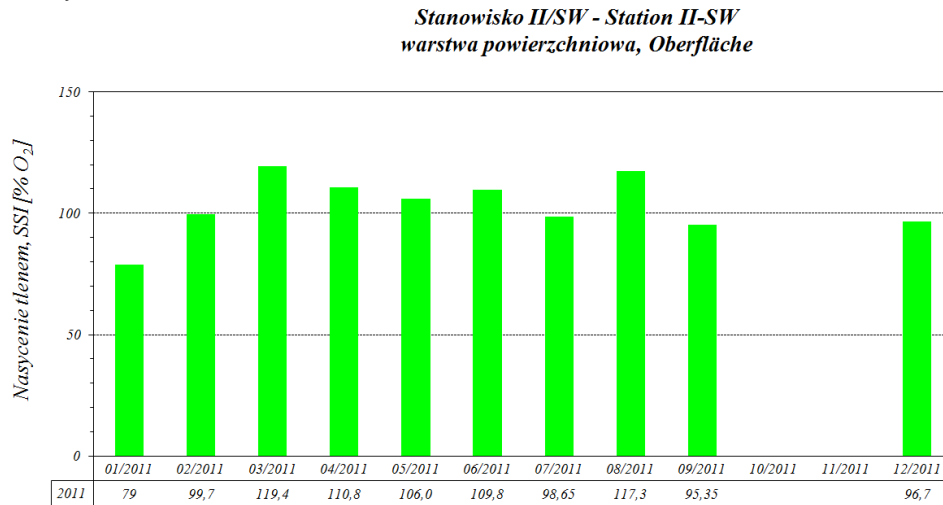


Abb.3.2.2.26 / Rys. 3.2.2.26

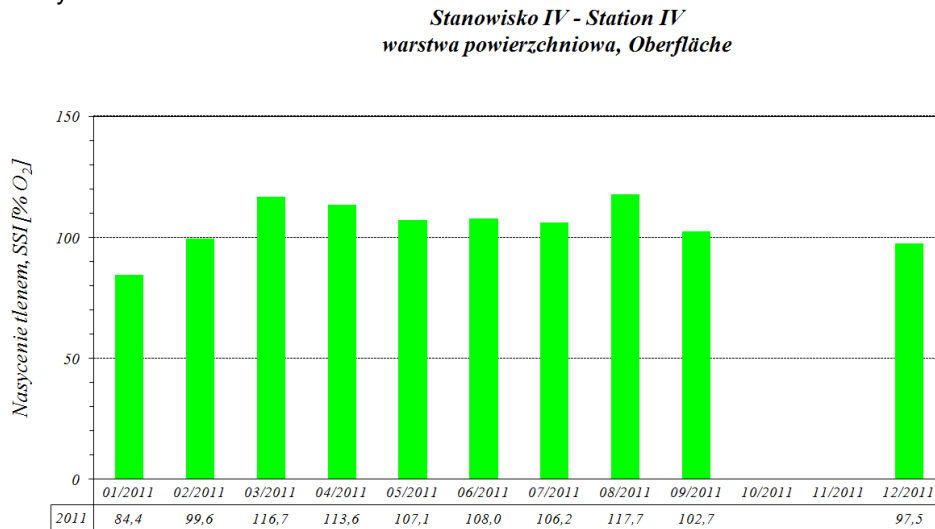
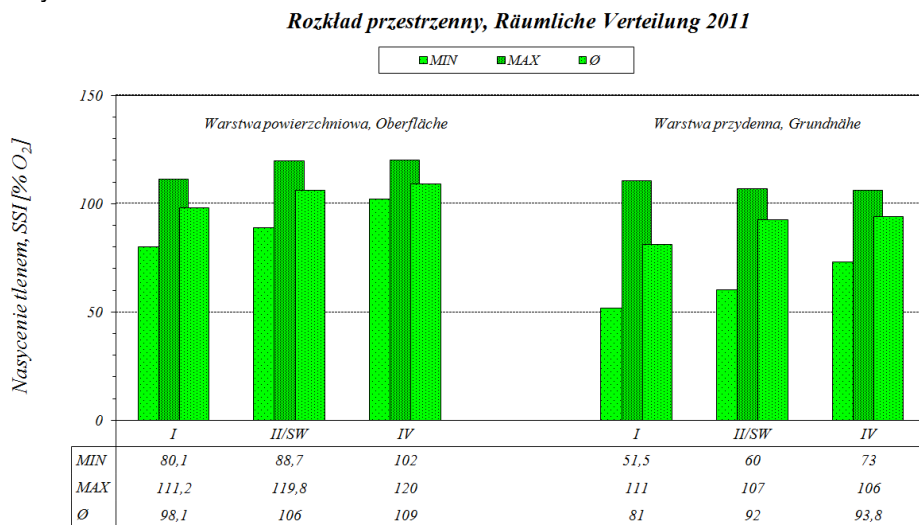


Abb.3.2.2.27 / Rys. 3.2.2.27



Pommersche Bucht *Zatoka Pomorska*
 Sauerstoffsättigung - mittl. Langzeitverhalten (April-November)
 Nasycenie tlenem w latach 1991-2011 (kwiecień-listopad)

Abb.3.2.2.28 / Rys. 3.2.2.28

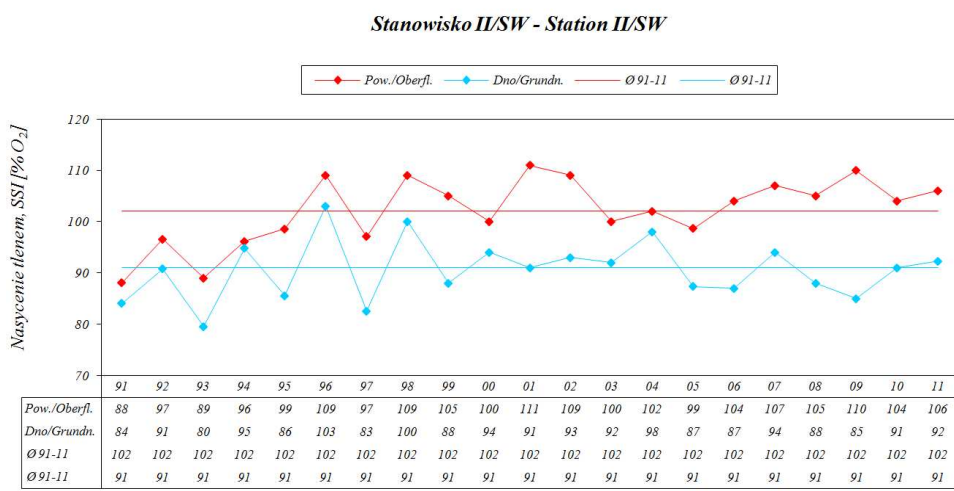


Abb.3.2.2.29 / Rys. 3.2.2.29

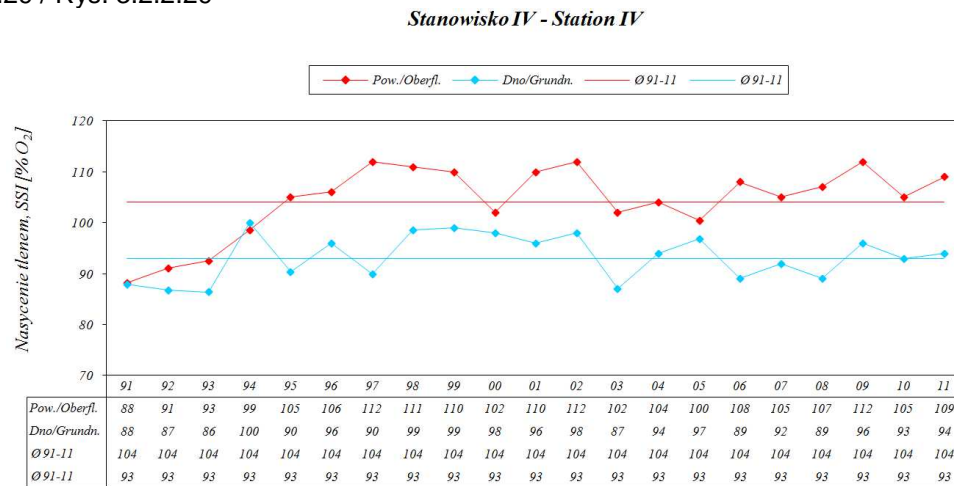
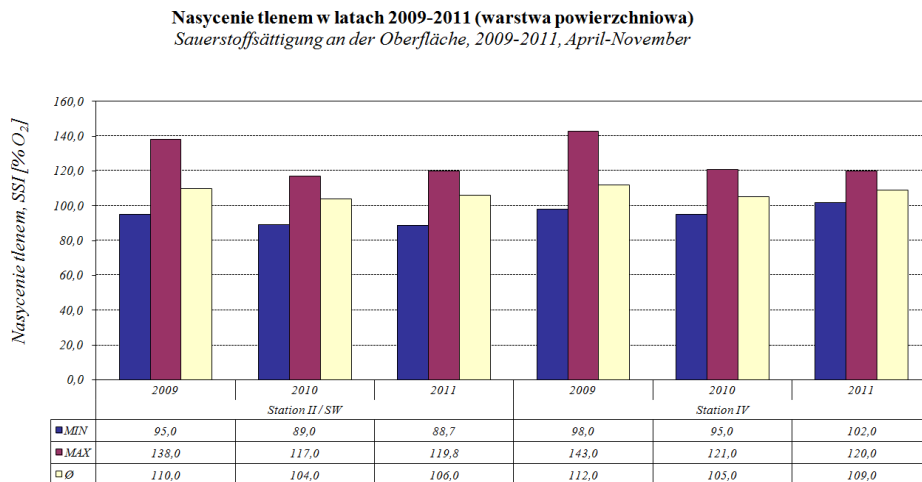


Abb.3.2.2.30 / Rys. 3.2.2.30



Nitrat-Stickstoff - mittleres Langzeitverhalten (April-November)
 Azot azotanowy w latach 1991-2011 (kwiecień-listopad)
 Pommersche Bucht - Nitrat-N / Zatoka Pomorska - Azot azotanowy

Abb.3.2.2.31 / Rys. 3.2.2.31

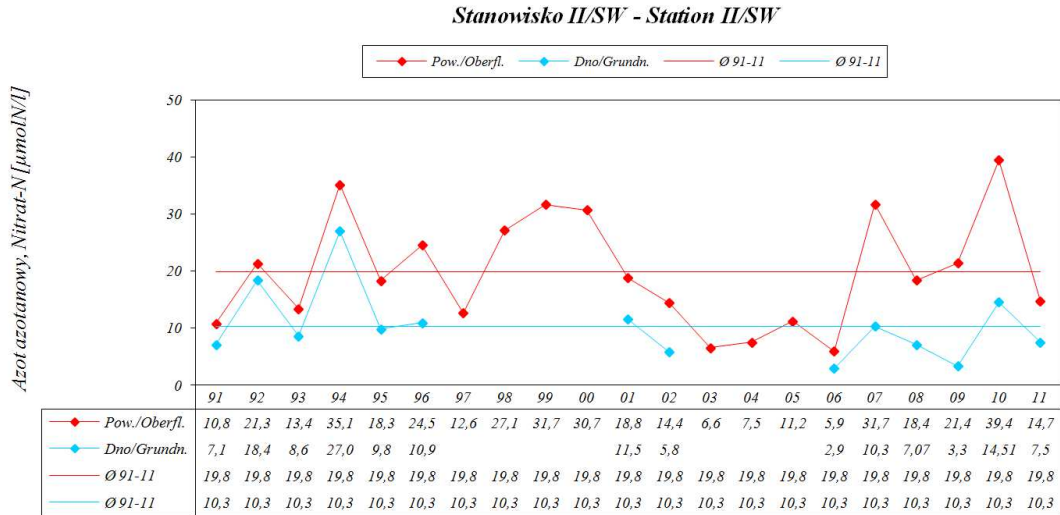


Abb.3.2.2.32 / Rys. 3.2.2.32

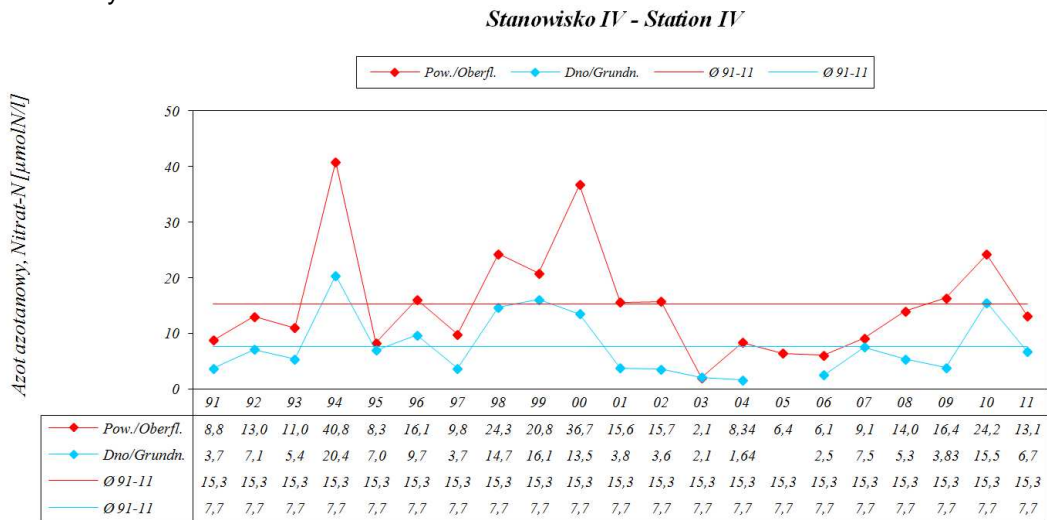


Abb.3.2.2.33 / Rys. 3.2.2.33

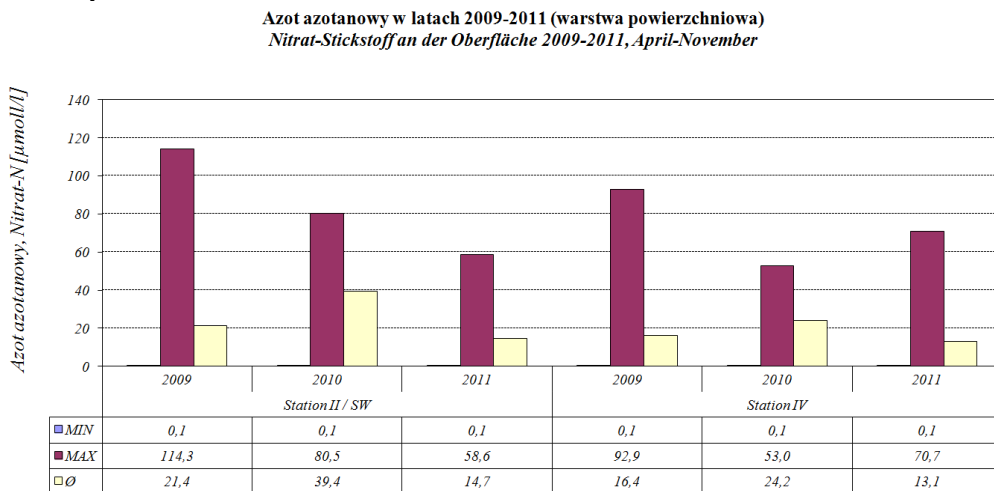


Abb.3.2.2.34 / Rys. 3.2.2.34

Stanowisko II/SW - Station II-SW
warstwa powierzchniowa, Oberfläche

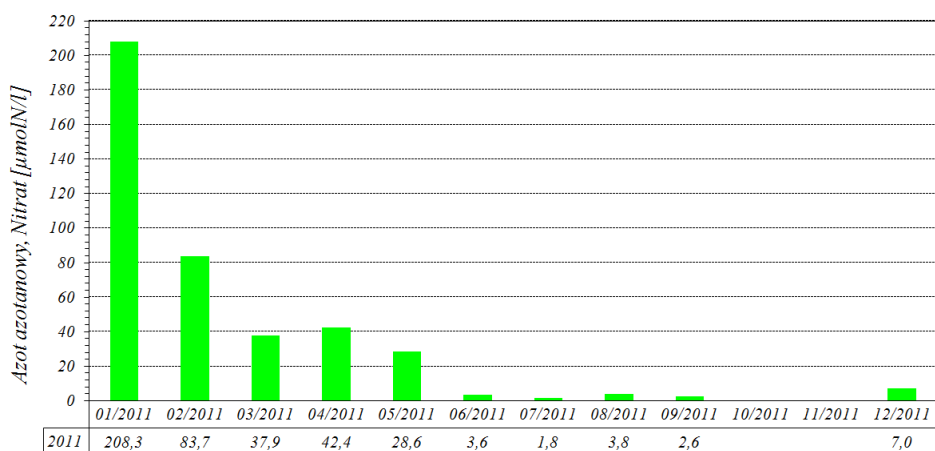


Abb.3.2.2.35 / Rys. 3.2.2.35

Stanowisko IV - Station IV
warstwa powierzchniowa, Oberfläche

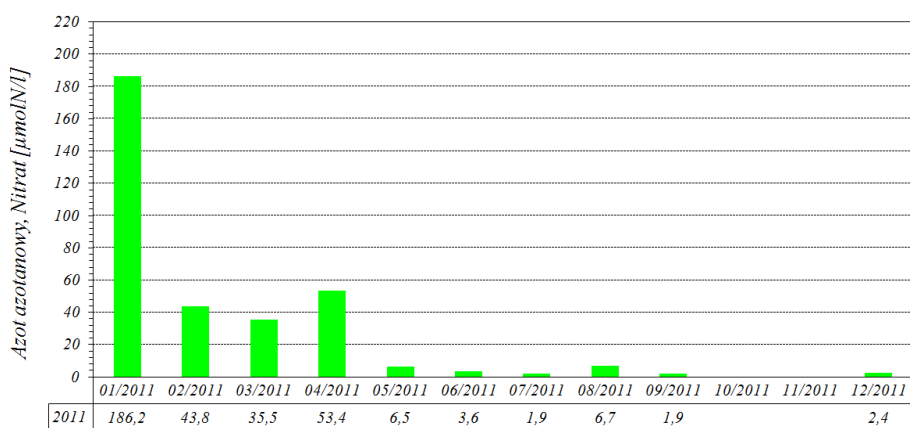
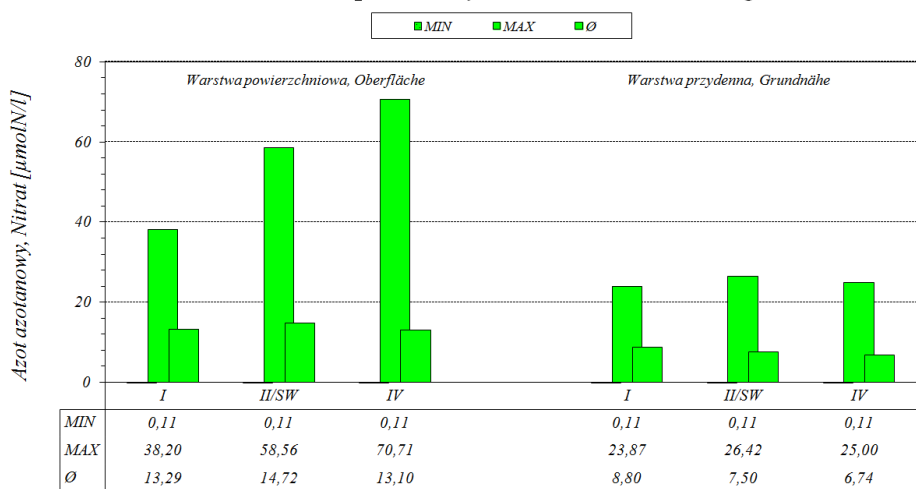


Abb.3.2.2.36 / Rys. 3.2.2.36

Rozkład przestrzenny 2011, Räumliche Verteilung 2011



Pommersche Bucht - Ammonium / *Zatoka Pomorska - Azot amonowy*

Abb.3.2.2.37 / Rys. 3.2.2.37

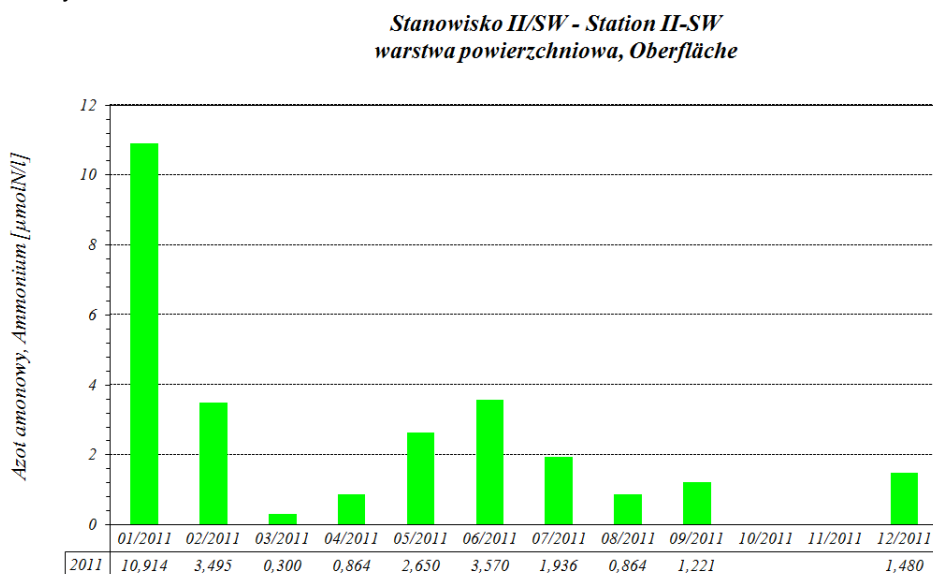


Abb.3.2.2.38 / Rys. 3.2.2.38

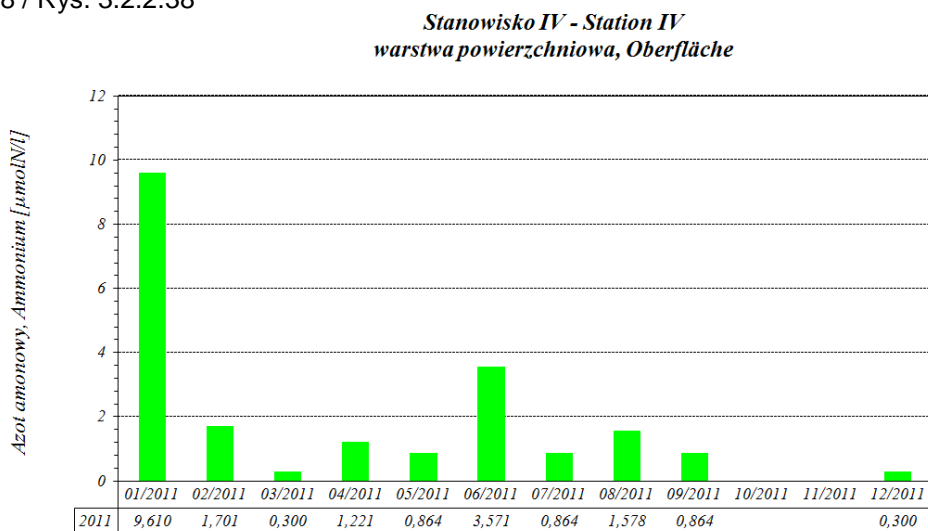
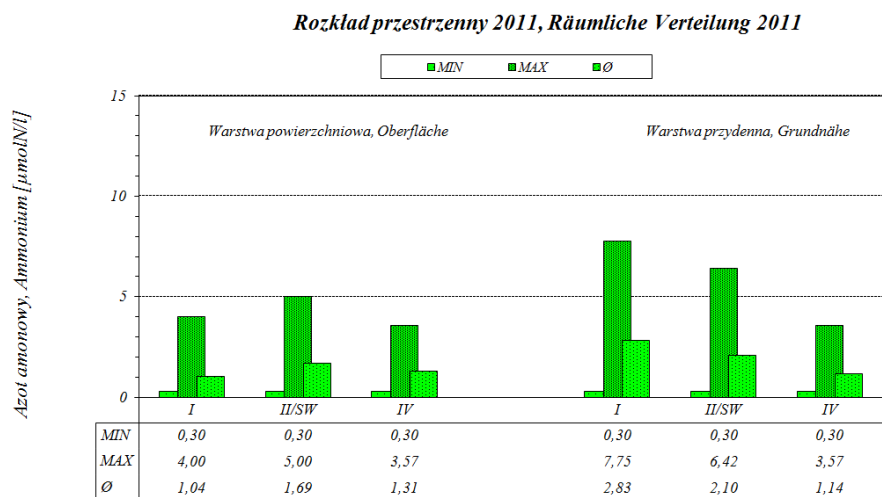


Abb.3.2.2.39 / Rys. 3.2.2.39



Pommersche Bucht *Zatoka Pomorska*
 Gesamt-Stickstoff - mittleres Langzeitverhalten (April-November)
 Azot ogólny w latach 1991-2011 (kwiecień-listopad)

Abb.3.2.2.40 / Rys. 3.2.2.40

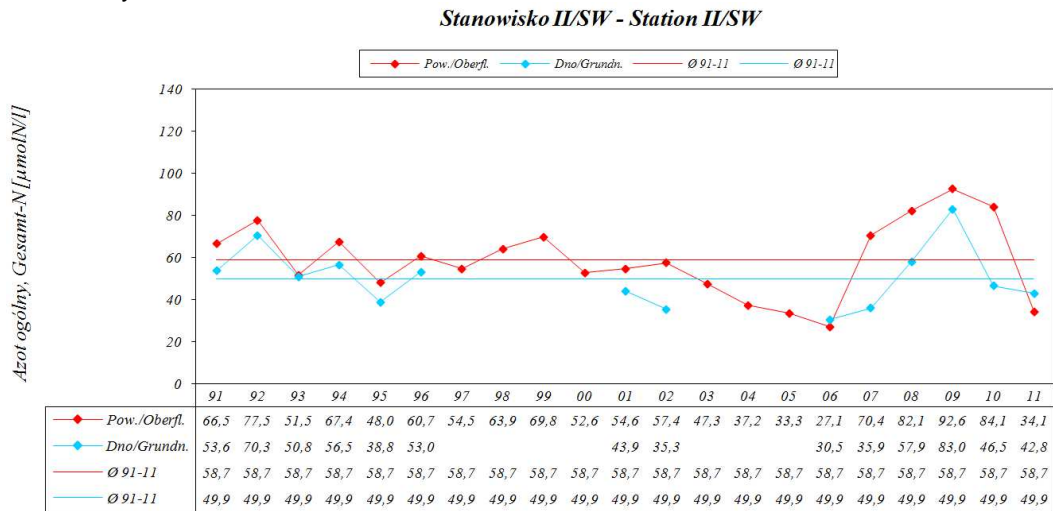


Abb.3.2.2.41 / Rys. 3.2.2.41

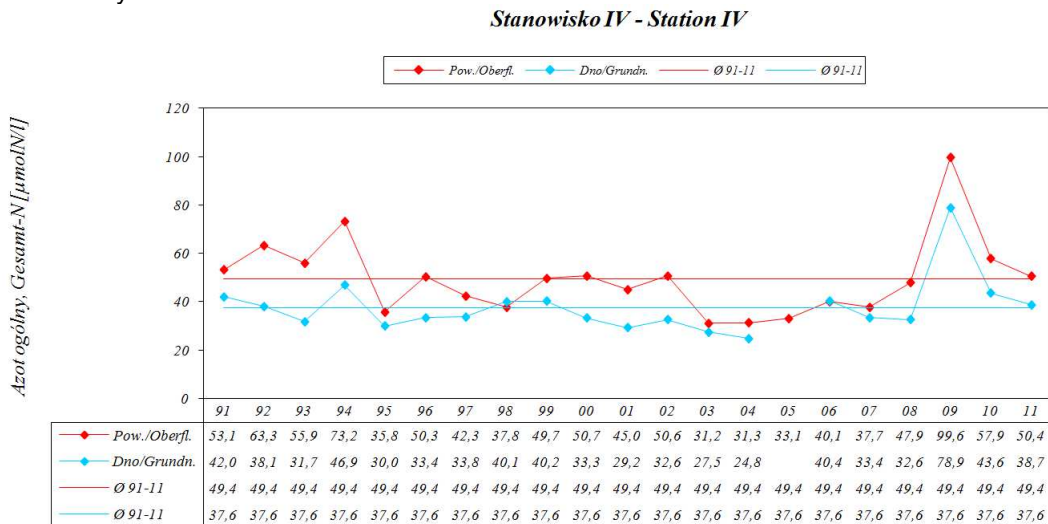
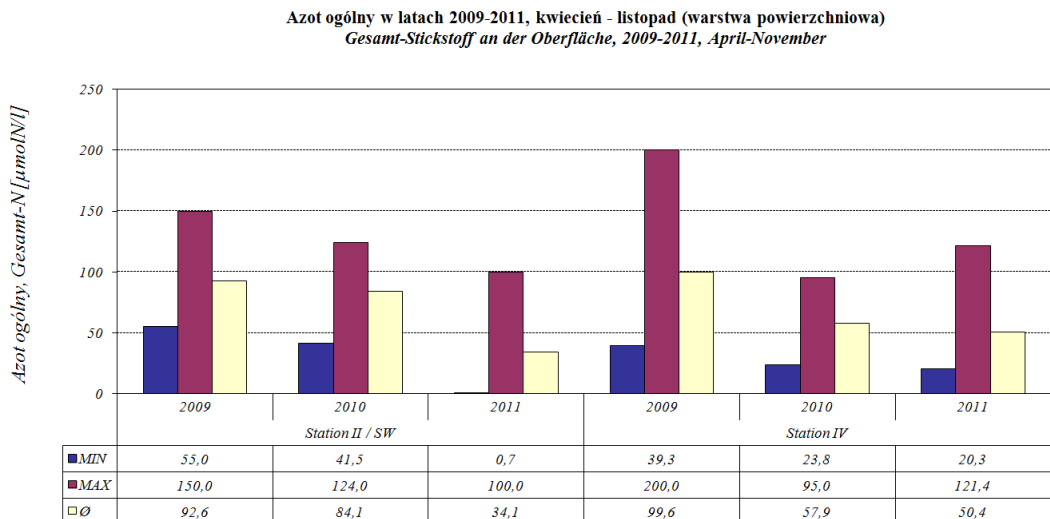


Abb.3.2.2.42 / Rys. 3.2.2.42



Pommersche Bucht - Gesamt-Stickstoff / Zatoka Pomorska - Azot ogólny

Abb.3.2.2.43 / Rys. 3.2.2.43

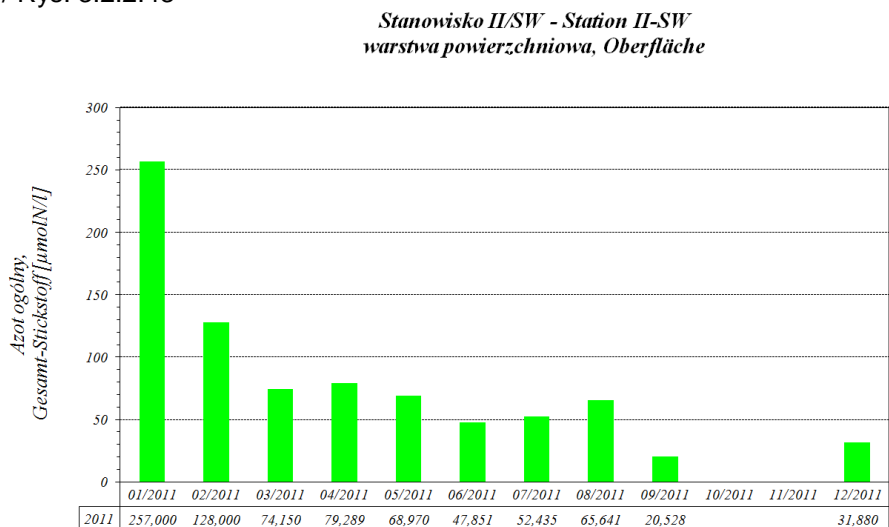


Abb.3.2.2.44 / Rys. 3.2.2.44

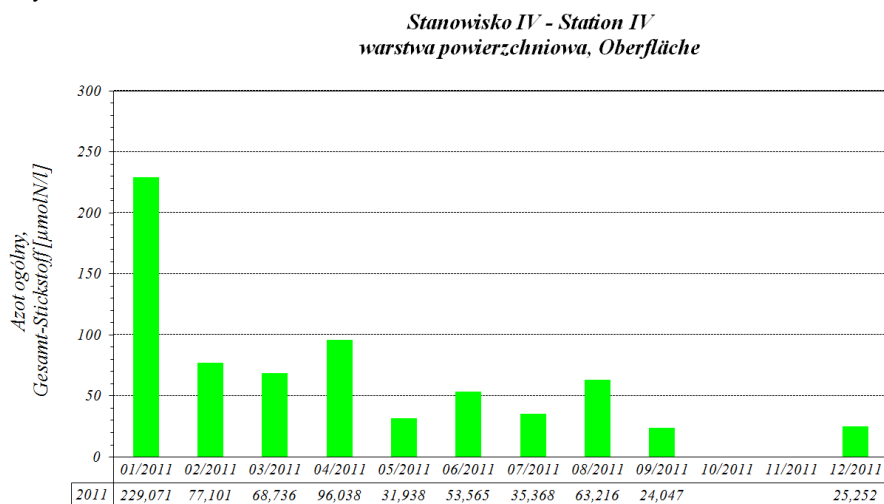
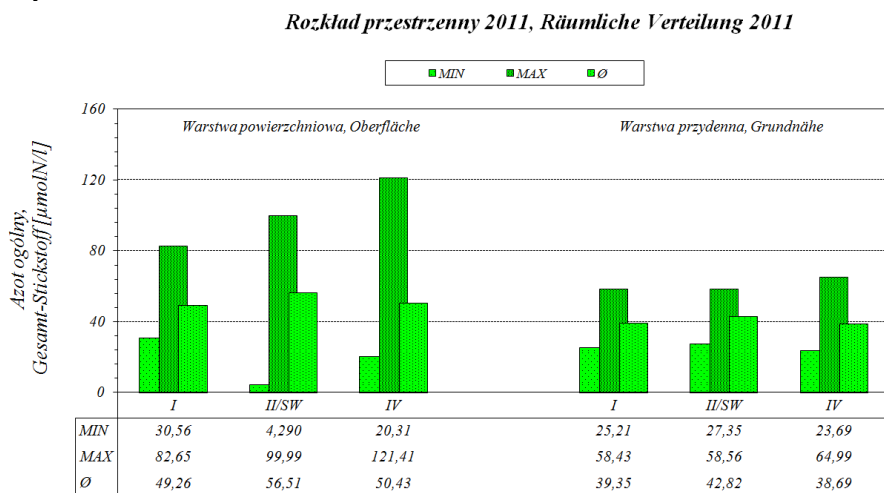


Abb.3.2.2.45 / Rys. 3.2.2.45



Pommersche Bucht *Zatoka Pomorska*
 Orthophosphat - mittl. Langzeitverhalten (April-November)
 Ortofosforany w latach 1991-2011 (kwiecień-listopad)

Abb.3.2.2.46 / Rys. 3.2.2.46

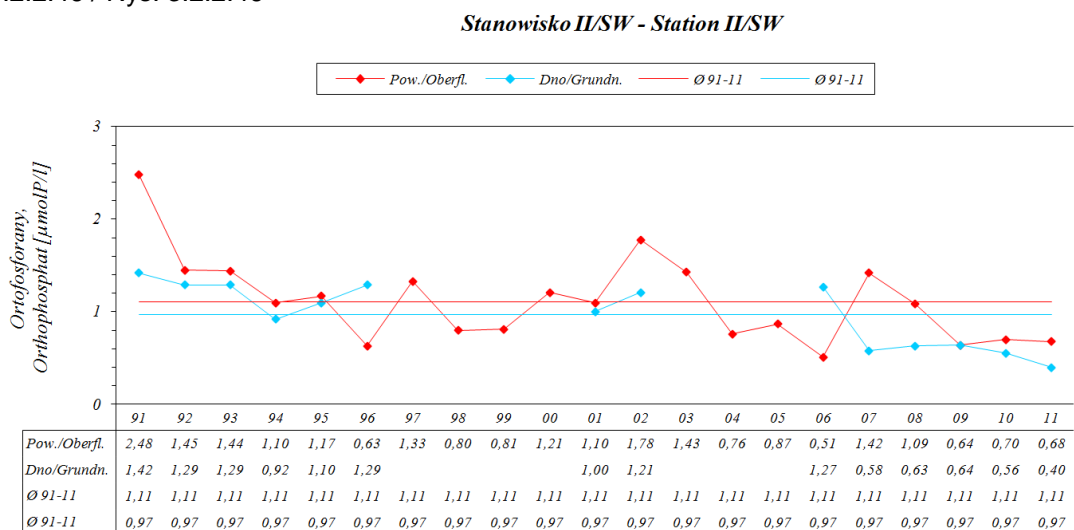


Abb.3.2.2.47 / Rys. 3.2.2.47

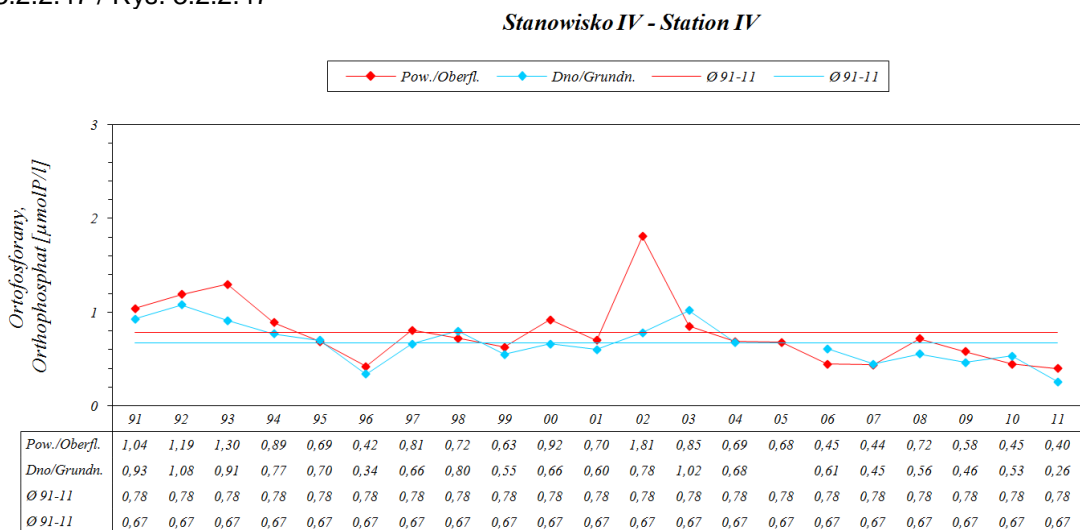
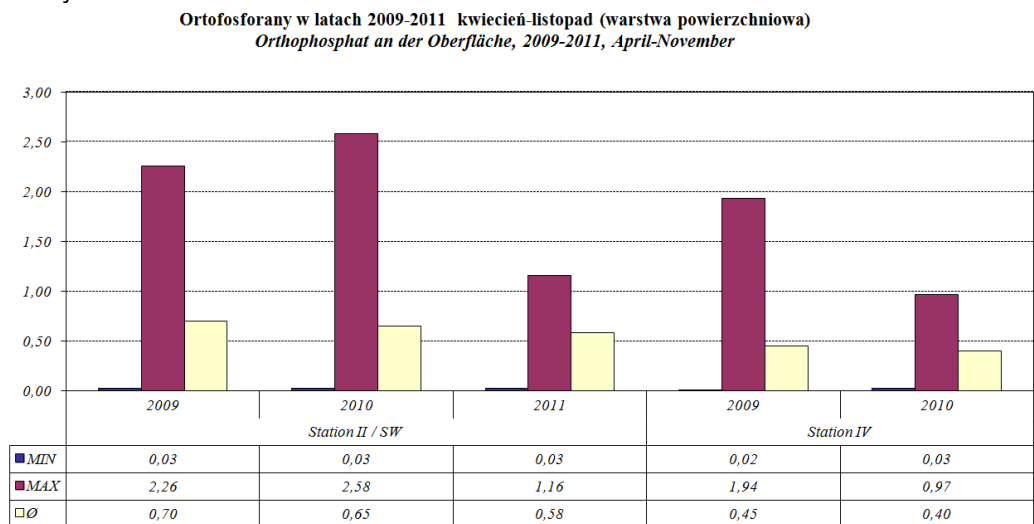


Abb.3.2.2.48 / Rys. 3.2.2.48



Pommersche Bucht - Orthophosphat / Zatoka Pomorska - Ortofosforany

Abb.3.2.2.49 / Rys. 3.2.2.49

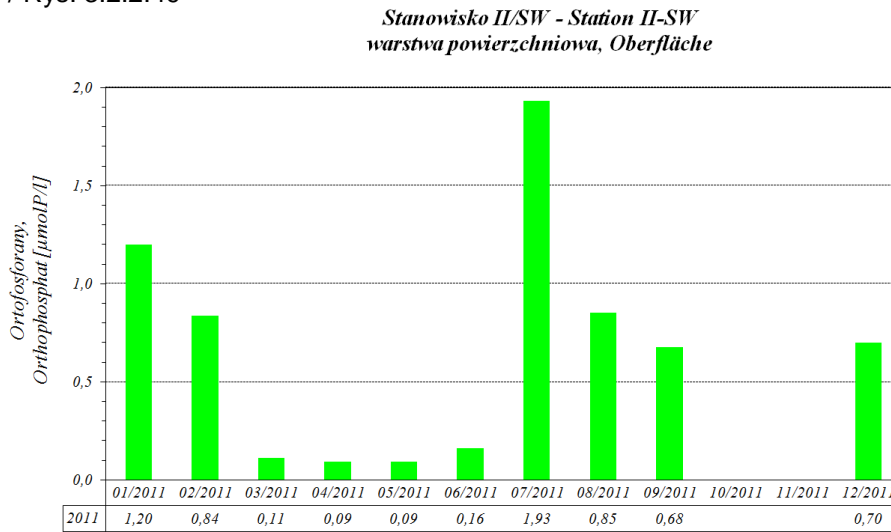


Abb.3.2.2.50 / Rys. 3.2.2.50

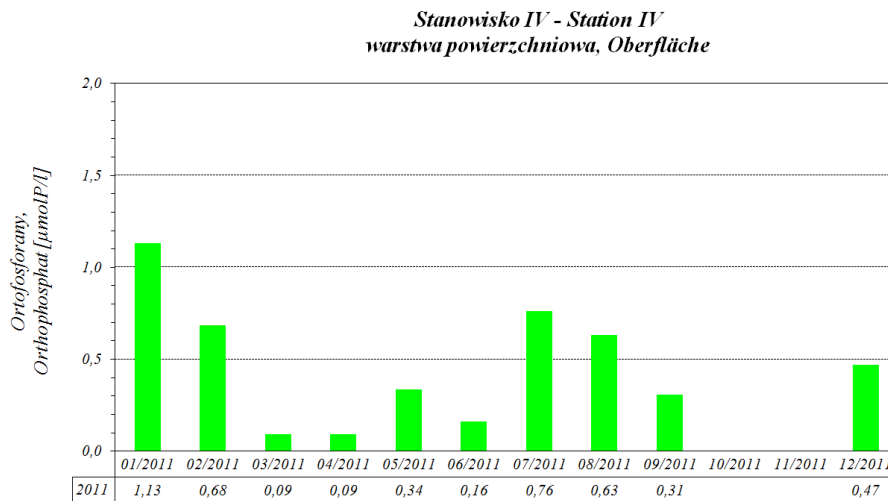
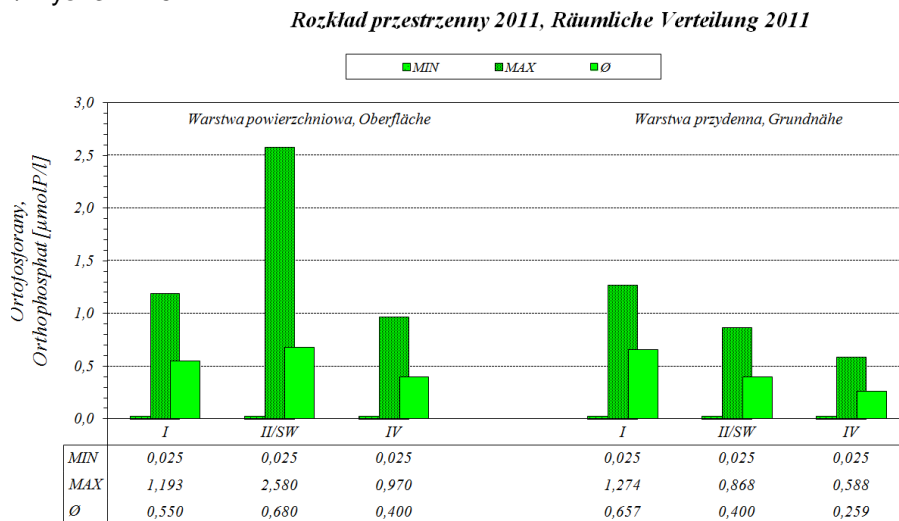


Abb.3.2.2.51 / Rys. 3.2.2.51



Pommersche Bucht *Zatoka Pomorska*
 Gesamt-Phosphor - mittl. Langzeitverhalten (April-November)
 Fosfor ogólny w latach 1991-2011 (kwiecień-listopad)

Abb.3.2.2.52 / Rys. 3.2.2.52

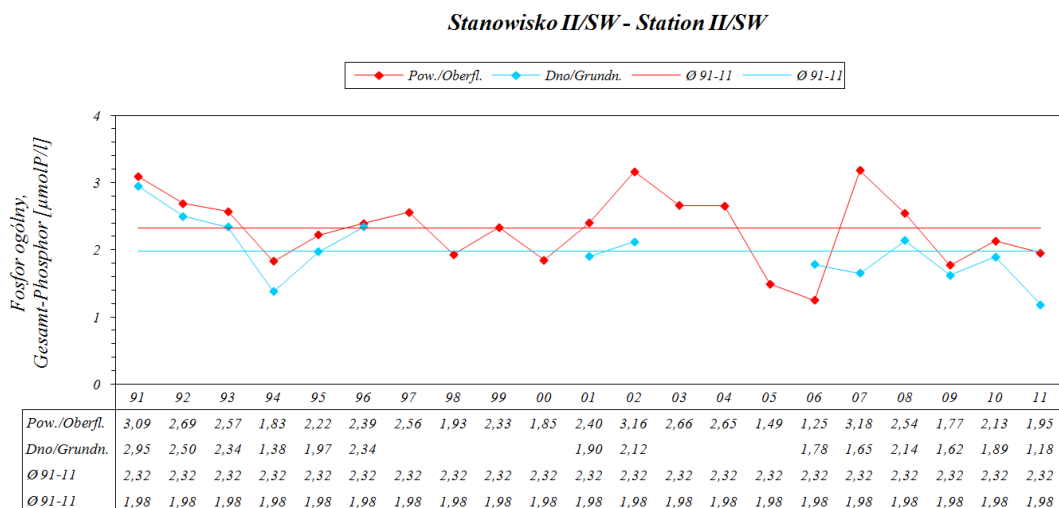


Abb.3.2.2.53 / Rys. 3.2.2.53

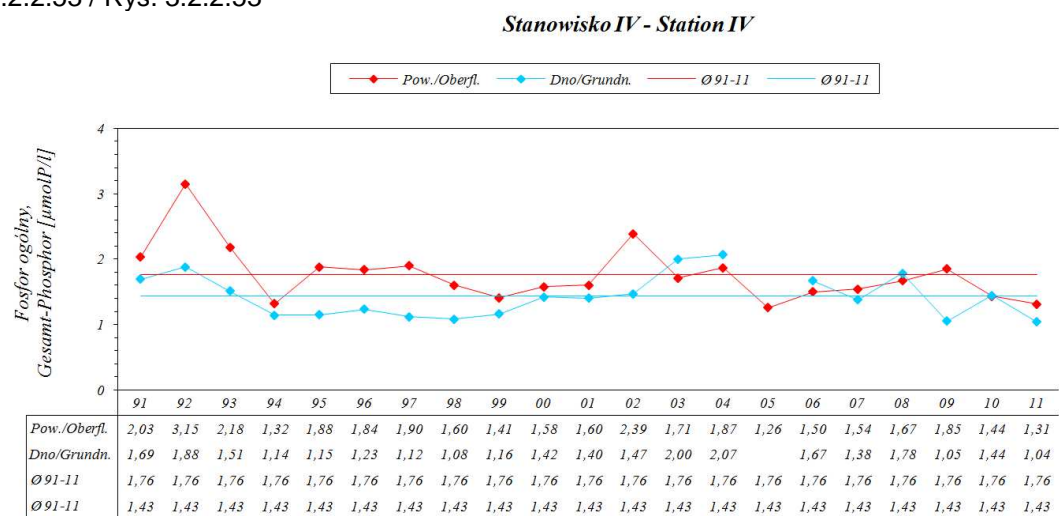
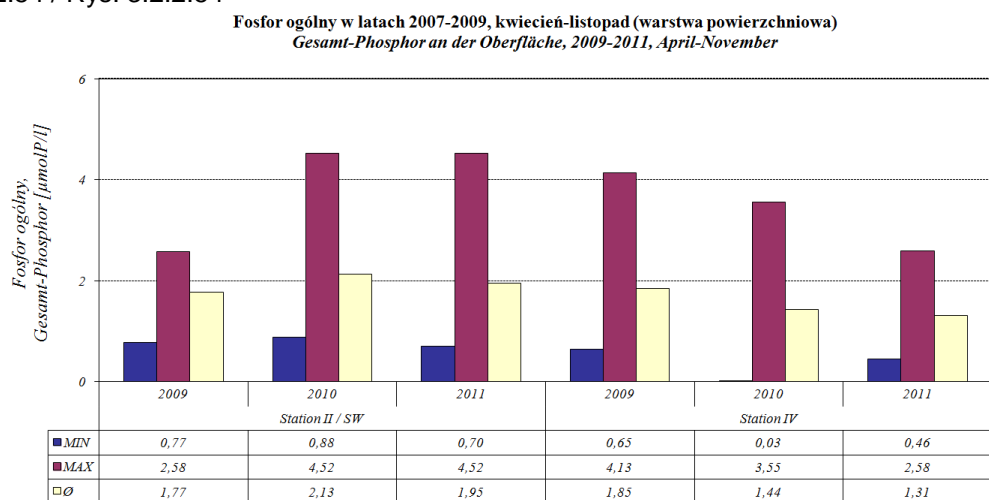


Abb.3.2.2.54 / Rys. 3.2.2.54



Pommersche Bucht - Gesamt-Phosphor / Zatoka Pomorska - Fosfor ogólny

Abb.3.2.2.55 / Rys. 3.2.2.55

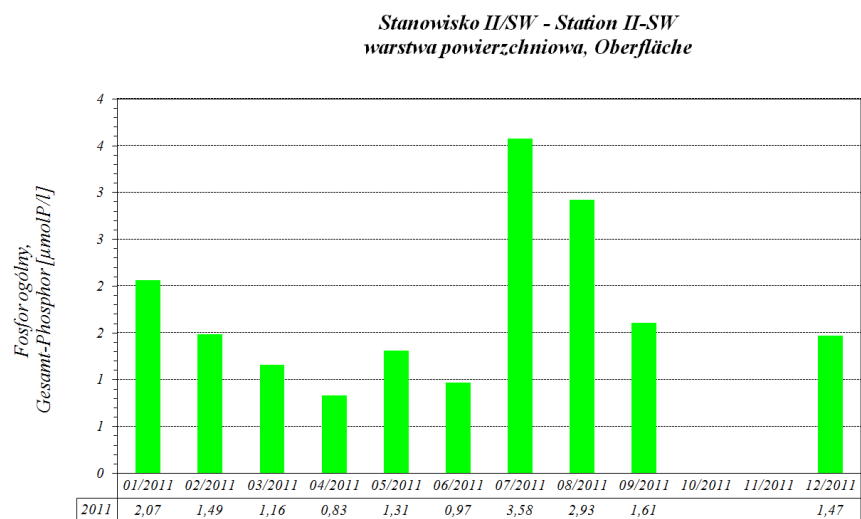


Abb.3.2.2.56 / Rys. 3.2.2.56

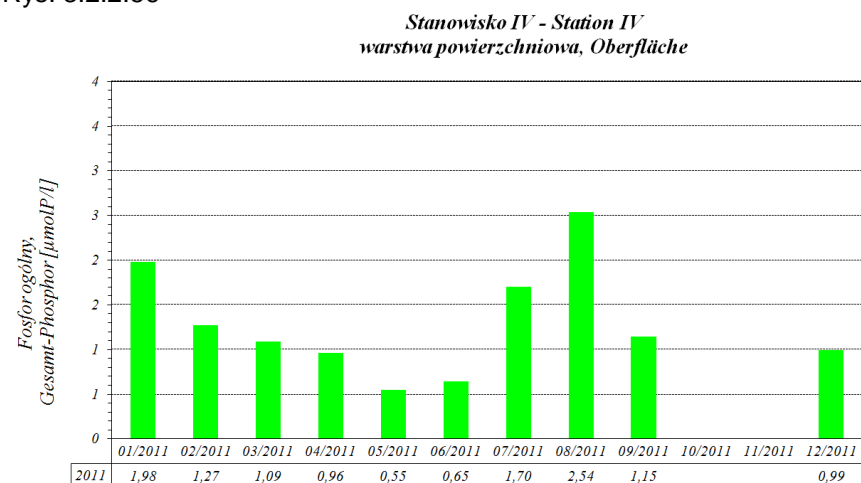
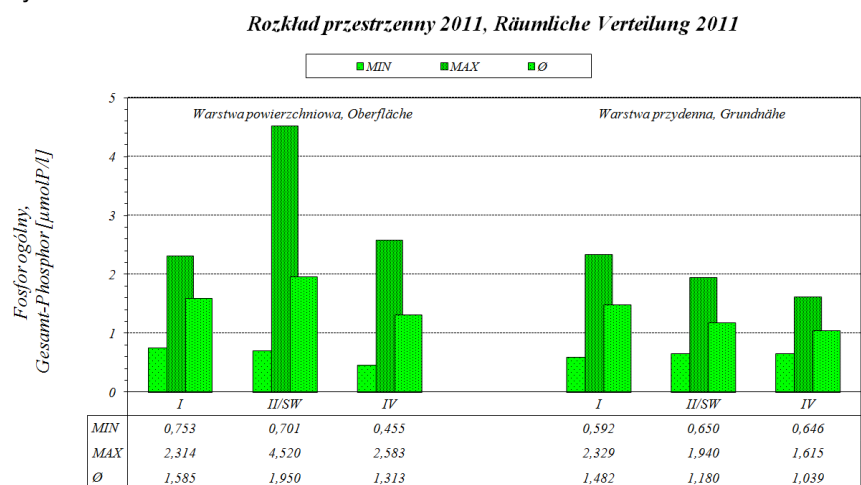


Abb.3.2.2.57 / Rys. 3.2.2.57



Pommersche Bucht - Silikat / Zatoka Pomorska - Krzemionka

Abb.3.2.2.58 / Rys. 3.2.2.58

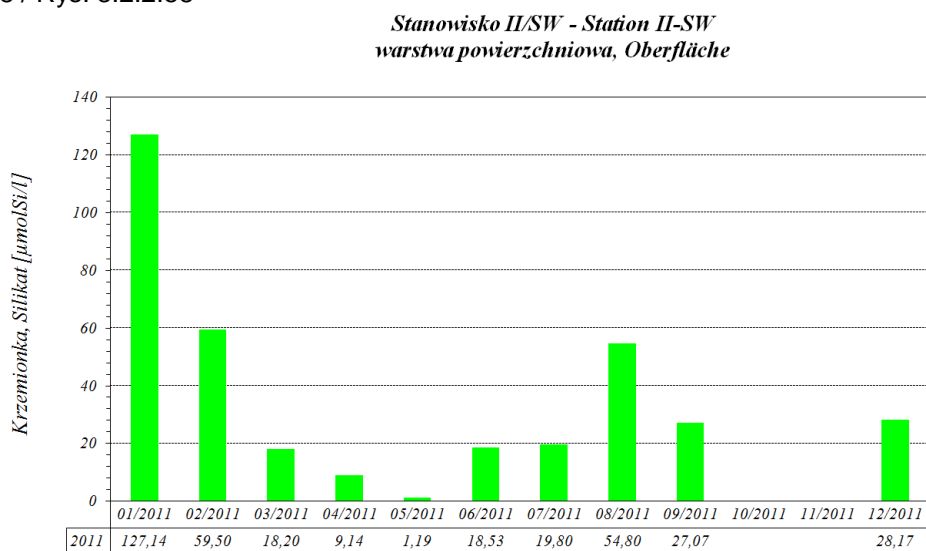


Abb.3.2.2.59 / Rys. 3.2.2.59

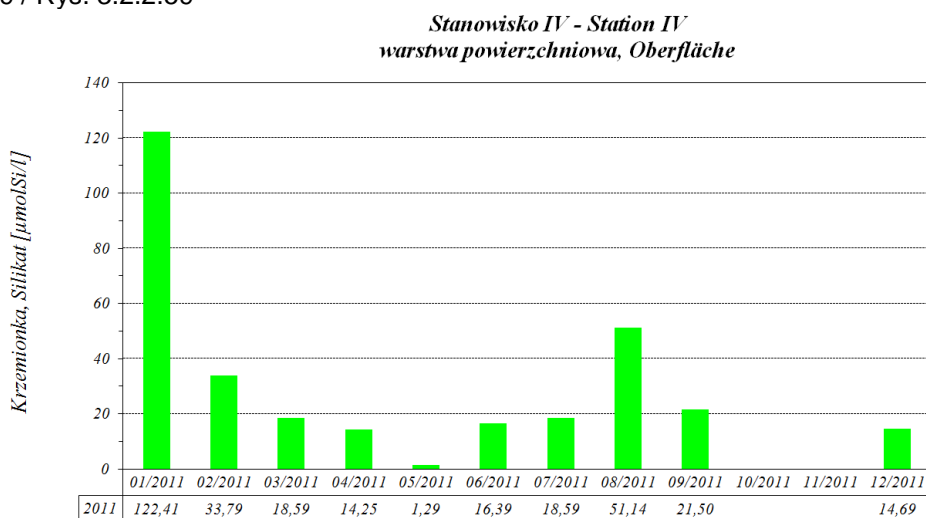
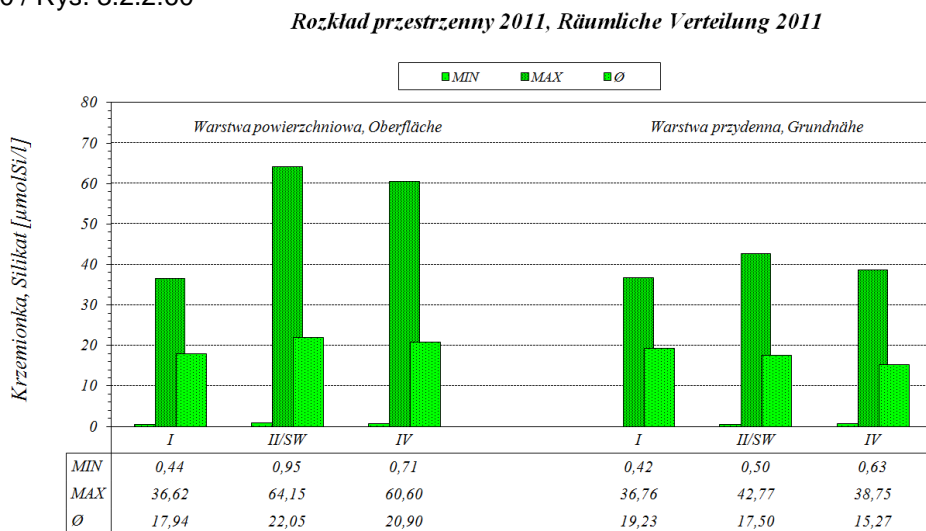


Abb.3.2.2.60 / Rys. 3.2.2.60



Pommersche Bucht - Sichttiefe / Zatoka Pomorska - Przezroczystość

Abb.3.2.2.61 / Rys. 3.2.2.61

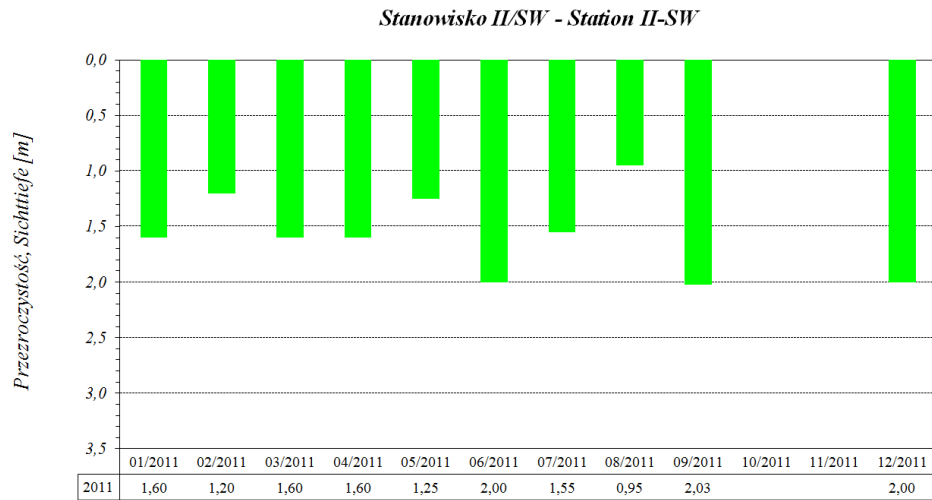


Abb.3.2.2.62 / Rys. 3.2.2.62

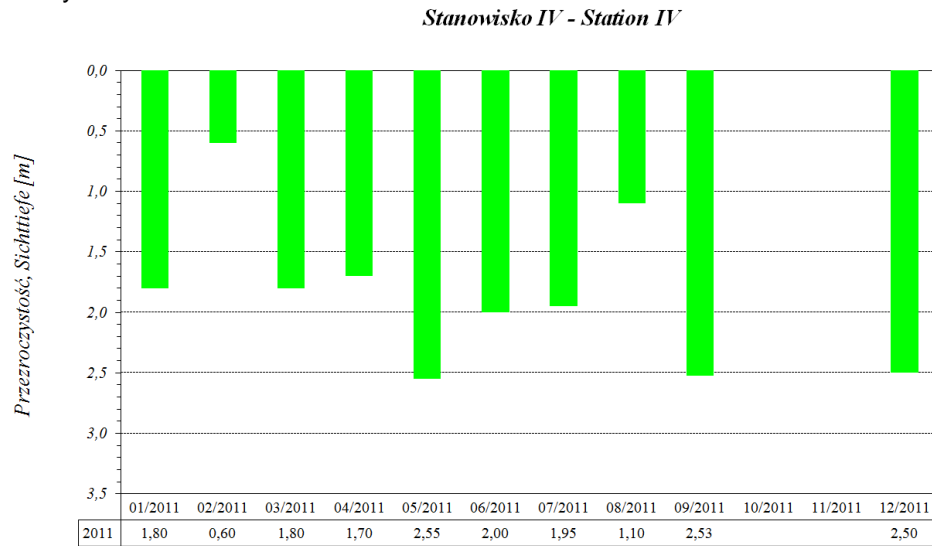
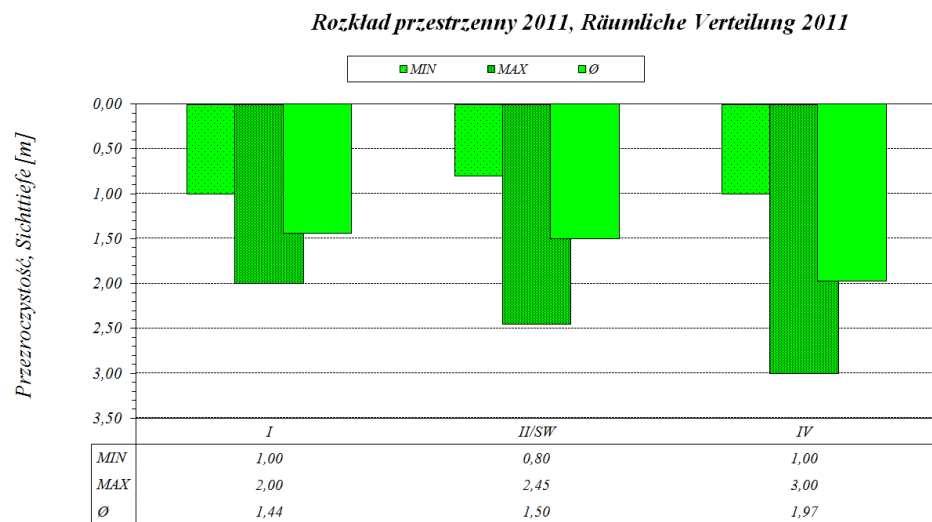


Abb.3.2.2.63 / Rys. 3.2.2.63



Pommersche Bucht *Zatoka Pomorska*
 Chlorophyll-a - mittl. Langzeitverhalten (April-November)
Chlorofil-a w latach 1991-2011 (kwiecień-listopad)

Abb.3.2.2.64 / Rys. 3.2.2.64

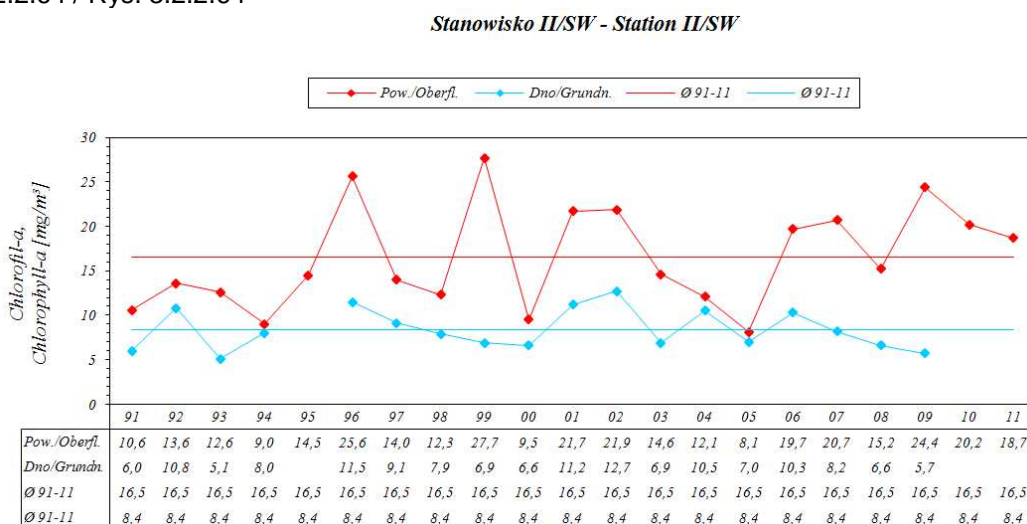


Abb.3.2.2.65 / Rys. 3.2.2.65

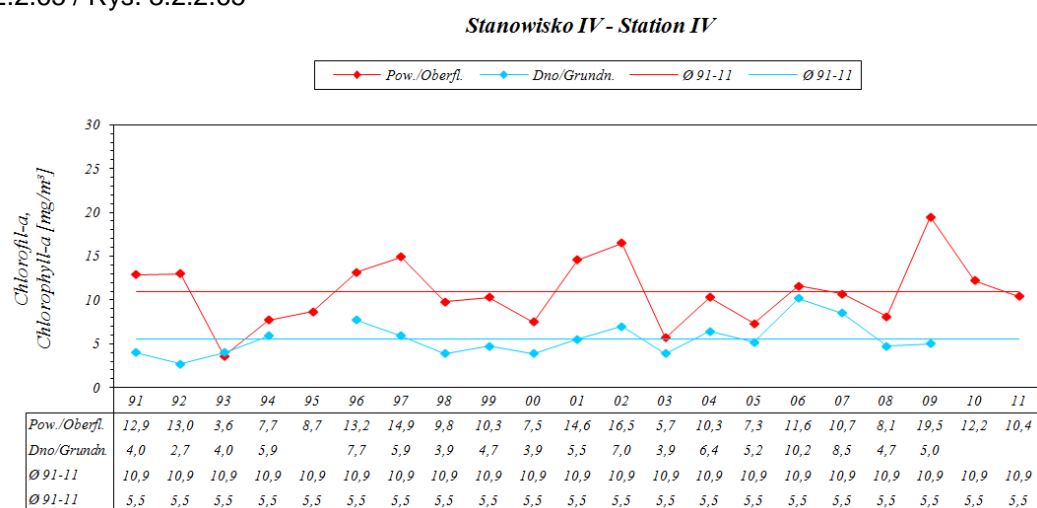
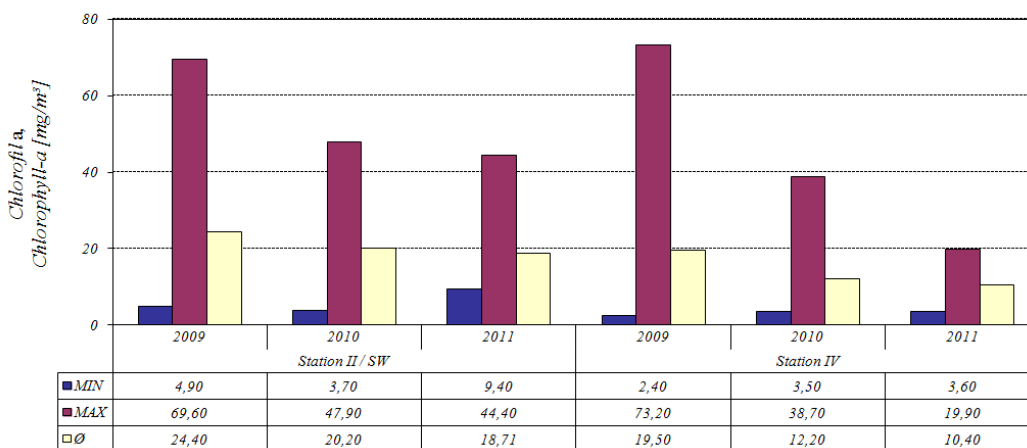


Abb.3.2.2.66 / Rys. 3.2.2.66

Chlorofil a w latach 2009-2011, kwiecień-listopad (warstwa powierzchniowa)
Chlorophyll-a an der Oberfläche, 2009-2011, April-November



Pommersche Bucht - Chlorophyll-a / Zatoka Pomorska - Chlorofil-a ogólny

Abb.3.2.2.67 / Rys. 3.2.2.67

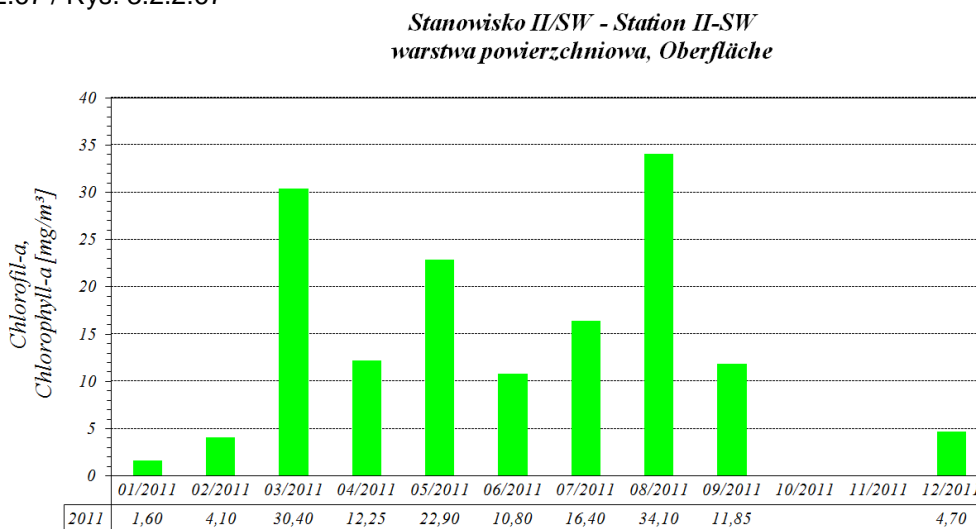


Abb.3.2.2.68 / Rys. 3.2.2.68

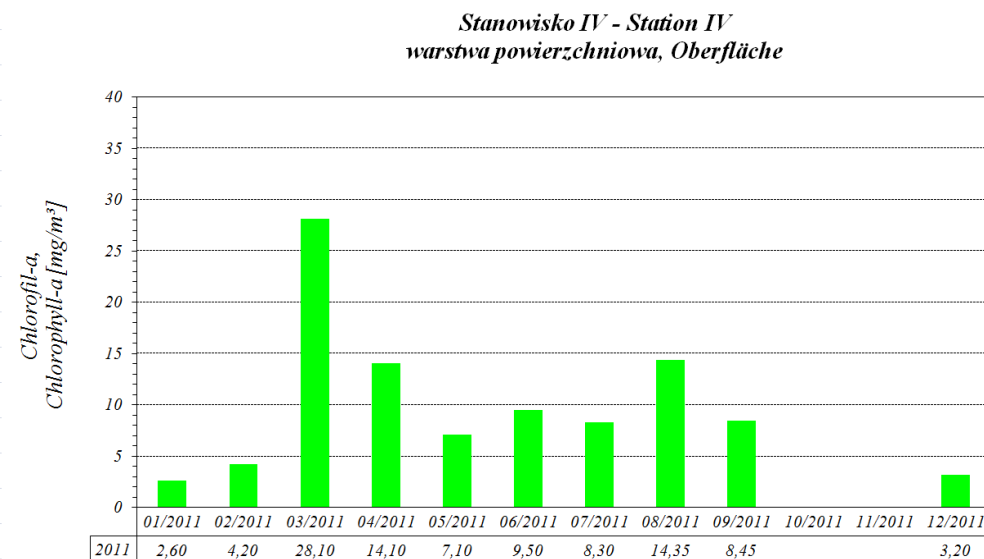
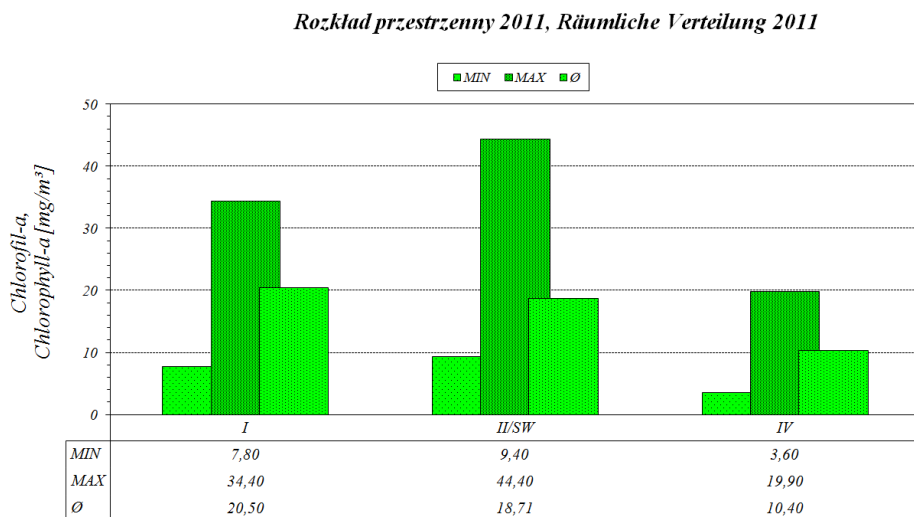


Abb.3.2.2.69 / Rys. 3.2.2.69



Pommersche Bucht - Phytoplanktonbiomase /
Zatoka Pomorska - Biomasa fitoplanktonu na stanowisku IV

Abb.3.2.2.70 / Rys. 3.2.2.70
Station IV PL - Stanowisko IV PL

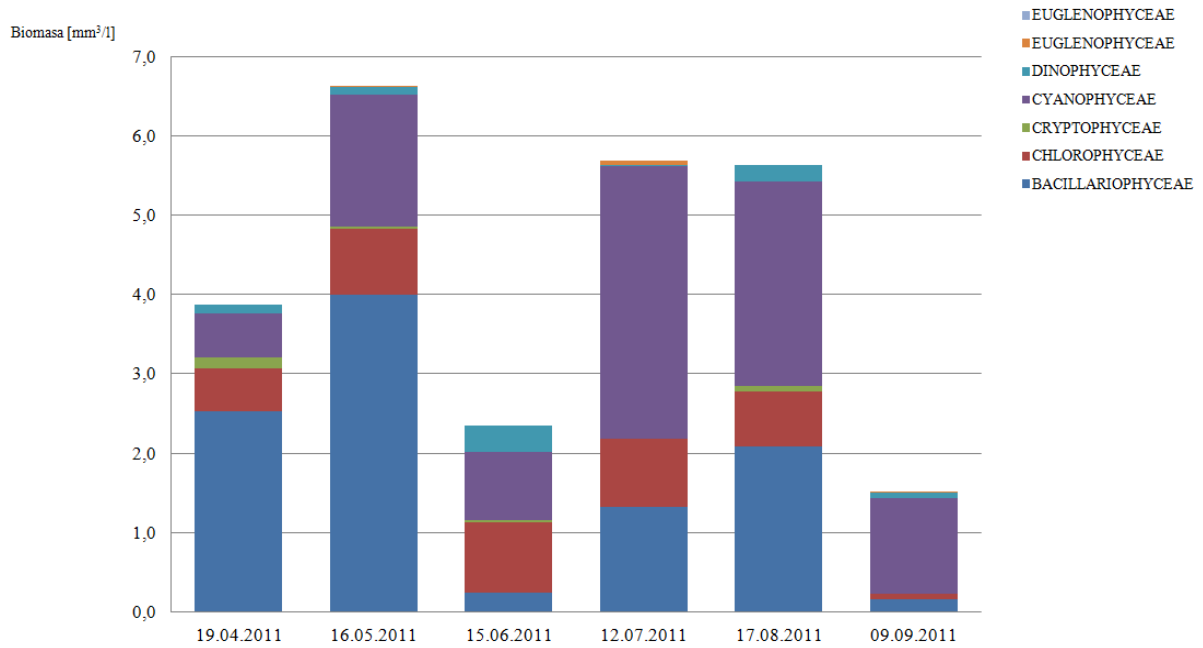


Abb.3.2.2.71 / Rys. 3.2.2.71
Station IV DE - Stanowisko IV DE

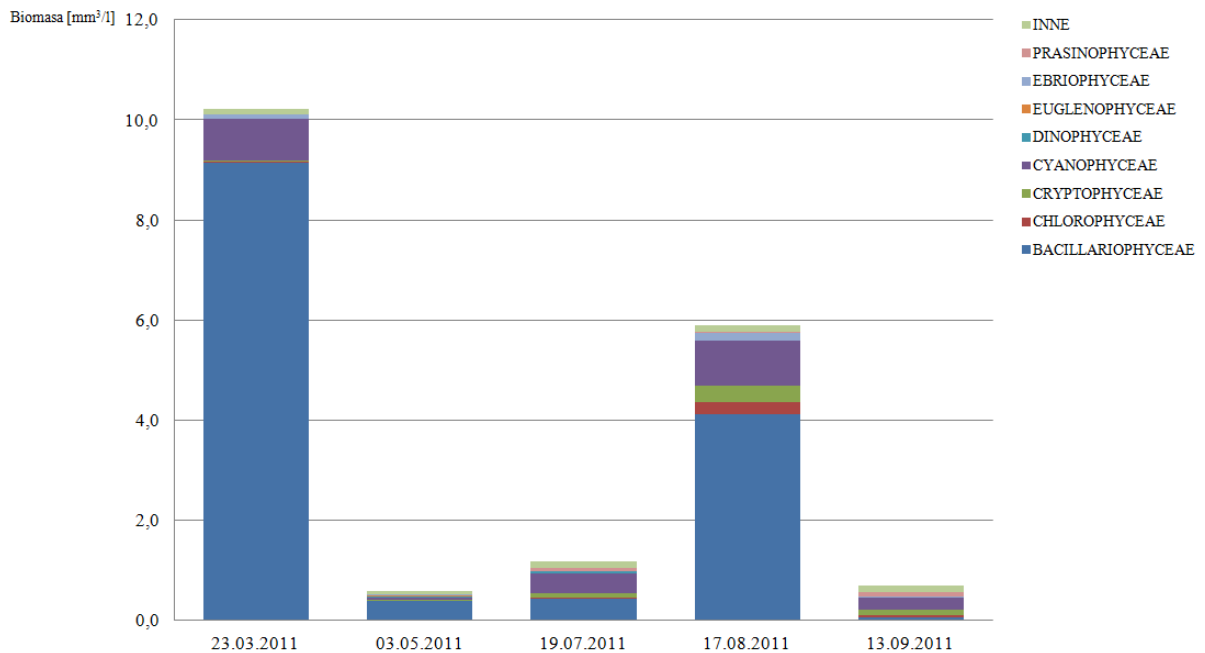


Abb.3.2.2.72 / Rys. 3.2.2.72
 Station IV PL und DE - Stanowisko IV PL i DE

