

The ICPDR and the Water Framework Directive

Dr. Ursula Schmedtje



The Danube River Basin



- 10% of Europe
- 81 Mio inhabitants
- 18 countries

most international
river basin in the
world

Structure of presentation

- ICPDR – a Mechanism for Cooperation
- ICPDR and EU Water Framework Directive
- Danube Basin Analysis (WFD Roof report 2004)
- Development of the Danube RBM Plan
- Public participation

Danube River Protection Convention

a legal frame for co-operation to assure the protection of water and ecological resources and their sustainable use in the Danube River Basin

*signed on June 29, 1994 in Sofia
entered into force on October 22, 1998*

International Commission for the Protection of the Danube River (ICPDR)

has been established to implement the objectives and provisions and to achieve the goals of the Danube River Protection Convention

Since October 1, 1999

Contracting Parties

 Austria

 Bulgaria

 Croatia

 Czech Republic

 European Union

 Germany

 Hungary

 Moldova

 Romania

 Serbia and Montenegro

 Slovakia

 Slovenia

 Ukraine

 Bosnia and Herzegovina

Other Danube Countries:

 Albania

 Italy

 Macedonia

 Poland

 Switzerland

Observers to the ICPDR



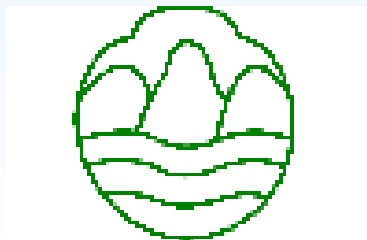
Black Sea Commission



UNESCO-IHP



Navigation Commission



REC



Danube Tourist
Commission

Danube River Protection Convention

OBJECTIVES

- ➔ Ensure sustainable and equitable water management;
- ➔ Ensure conservation, improvement and the rational use of surface waters and ground water;
- ➔ Control discharge of waste waters, inputs of nutrients and hazardous substances from point and non-point sources of emissions;
- ➔ Control floods and ice hazards;
- ➔ Control hazards originating from accidents (warning and preventive measures);
- ➔ Reduce pollution loads of the Black Sea from sources in the Danube catchment area.



CONFERENCE OF THE PARTIES

Standing Working Group

- co-ordinate the ICPDR work between meetings
- prepare main strategic issues for the ICPDR
- guide the activity of the Expert Groups

International Commission for the Protection of the Danube River (ICPDR)

- Implementation of Danube River Protection Convention (DRPC)
- Decision making, management and coordination of regional cooperation
- Approval of the budget and annual work programme
- Follow up of activities and evaluation of results from Expert Groups
- Joint Action Programme

UNDP/GEF Danube Regional Project

- Creation of sustainable ecological conditions for land use and water mgmt
- Capacity building and reinforcement of trans-boundary cooperation
- Strengthening public involvement in environmental decision making
- Reinforcement of monitoring, evaluation and Information System

Legal and Administrative issues (ad-hoc S EG)

- Legal issues
- Administrative issues
- Financial issues

Permanent Secretariat (PS)

- Supporting the ICPDR sessions
- Supporting the Expert Groups
- Coordinating the work programme
- Supporting project development and implementation
- Maintenance of the Information System

River Basin Management (RBM EG)

- Integrated river basin management
- Implementation of the EU Water Framework Directive

Emissions (EMIS EG)

- Emissions from point sources
- Emissions from diffuse sources
- Guidelines on BAT

Monitoring, Laboratory and Information Mgmt (MLIM EG)

- Trans-National Monitoring Network
- Laboratory Quality Assurance

Accident Prevention and Control (APC EG)

- Accidental pollution incidents
- AEWS operation
- Accident prevention

Flood Protection (FP EG)

- Preparation and implementation of Action Plan for Sustainable Flood Protection

Danube - Black Sea Joint Technical Working Group

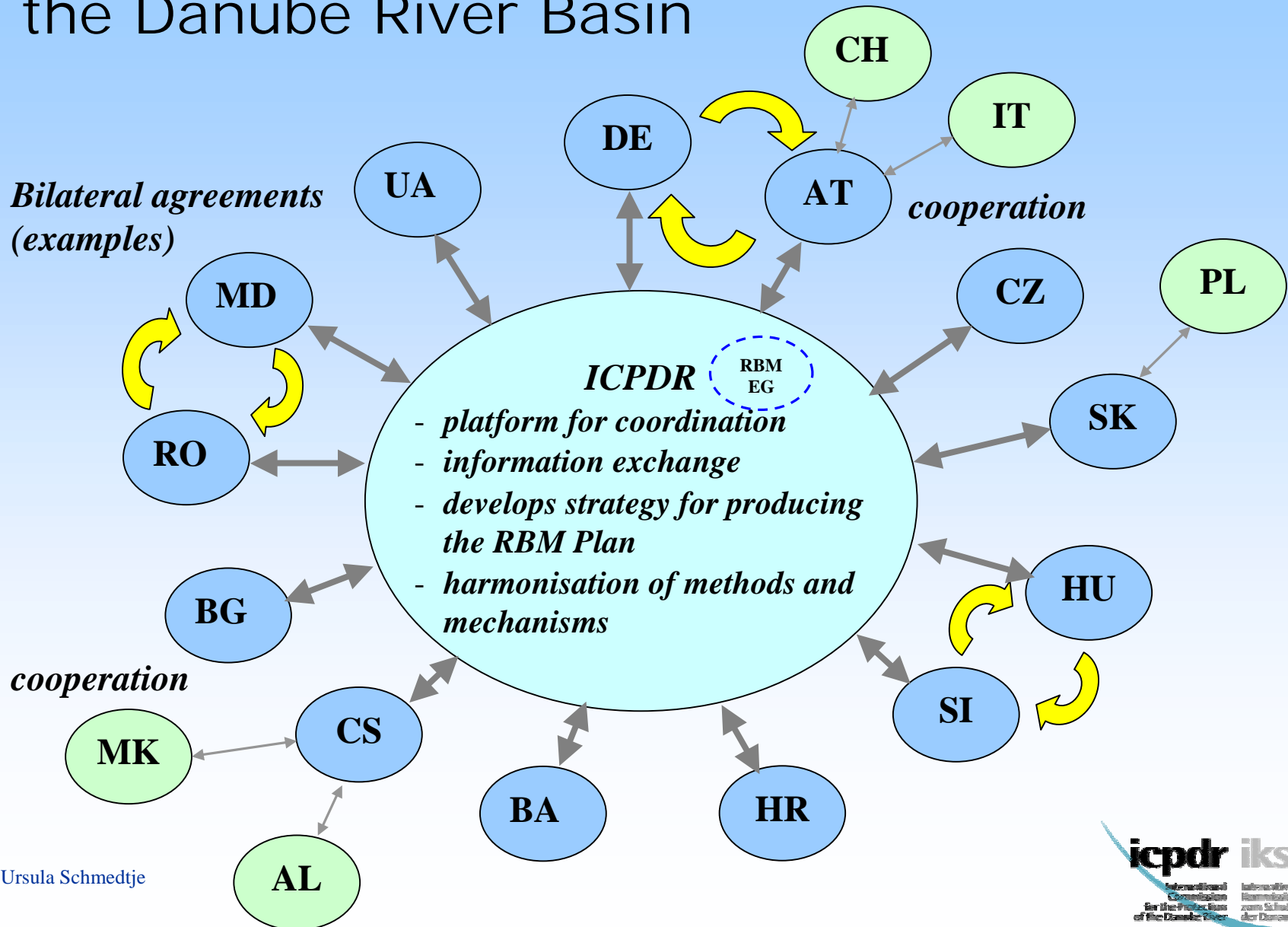
Analysis (RBM / ECON ESG)

EU Water Framework Directive

The ICPDR has been nominated as the platform for coordination

- for implementation of the Water Framework Directive,
- for development of the Danube River Basin Management Plan.

Coordination Mechanisms in the Danube River Basin



Development of the Danube RBM Plan

- preparation phase

European Commission

- Common Implementation Strategy
- Guidance documents

ICPDR RBM EG

- Coordination of WFD implementation
- Work Plan for development of RBM Plan

Develop strategies and guidance on special DRB topics

- preparation of roof report
- public participation

RBM Drafting Groups

Econ ESG

- economic analysis of water uses

- Danube GIS & mapping

GIS ESG

MLIM EG

- typology of surface water bodies
- Prepare monitoring programmes

EMIS EG

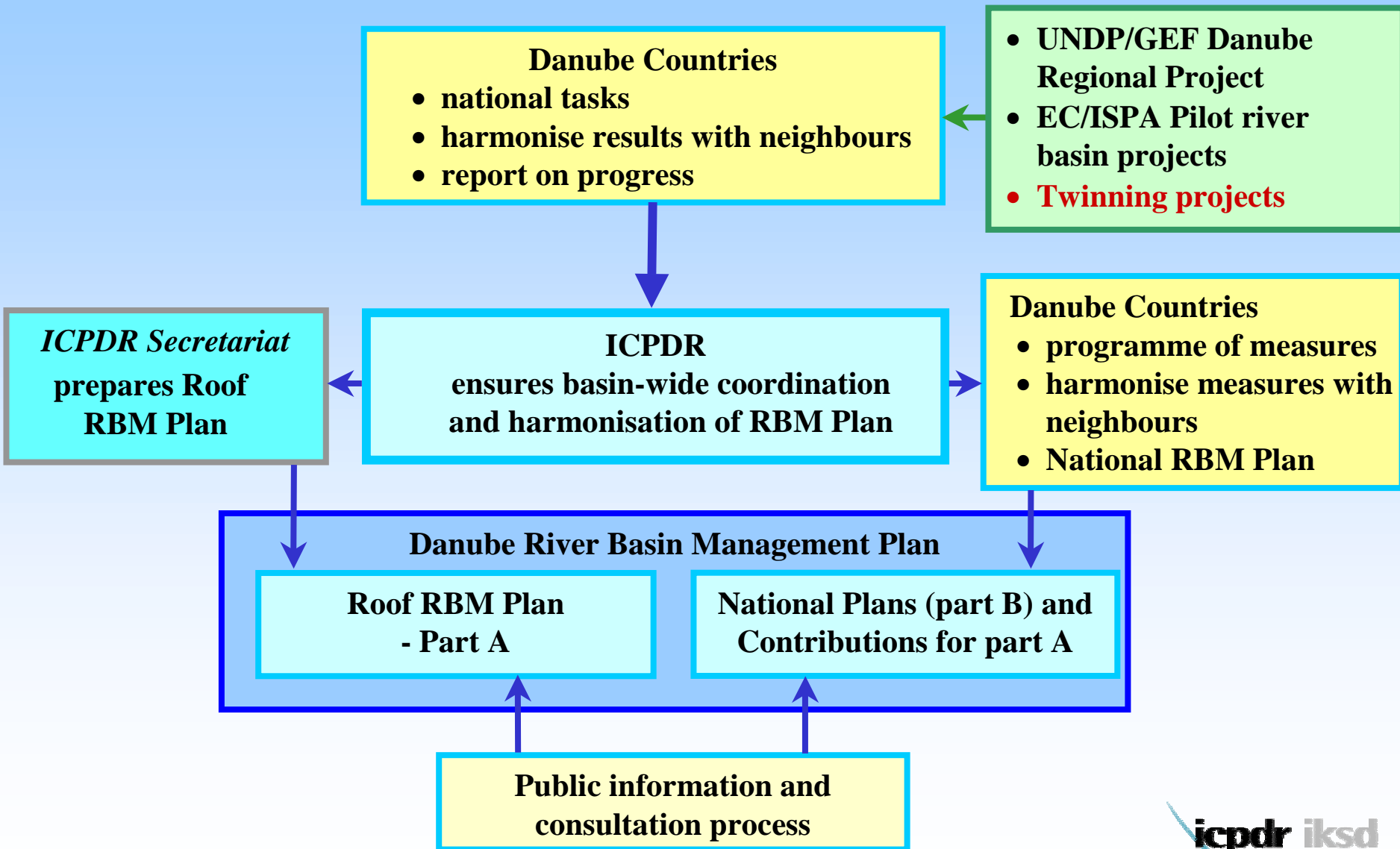
- significant pressures on surface waters from point and diffuse sources

ECO EG

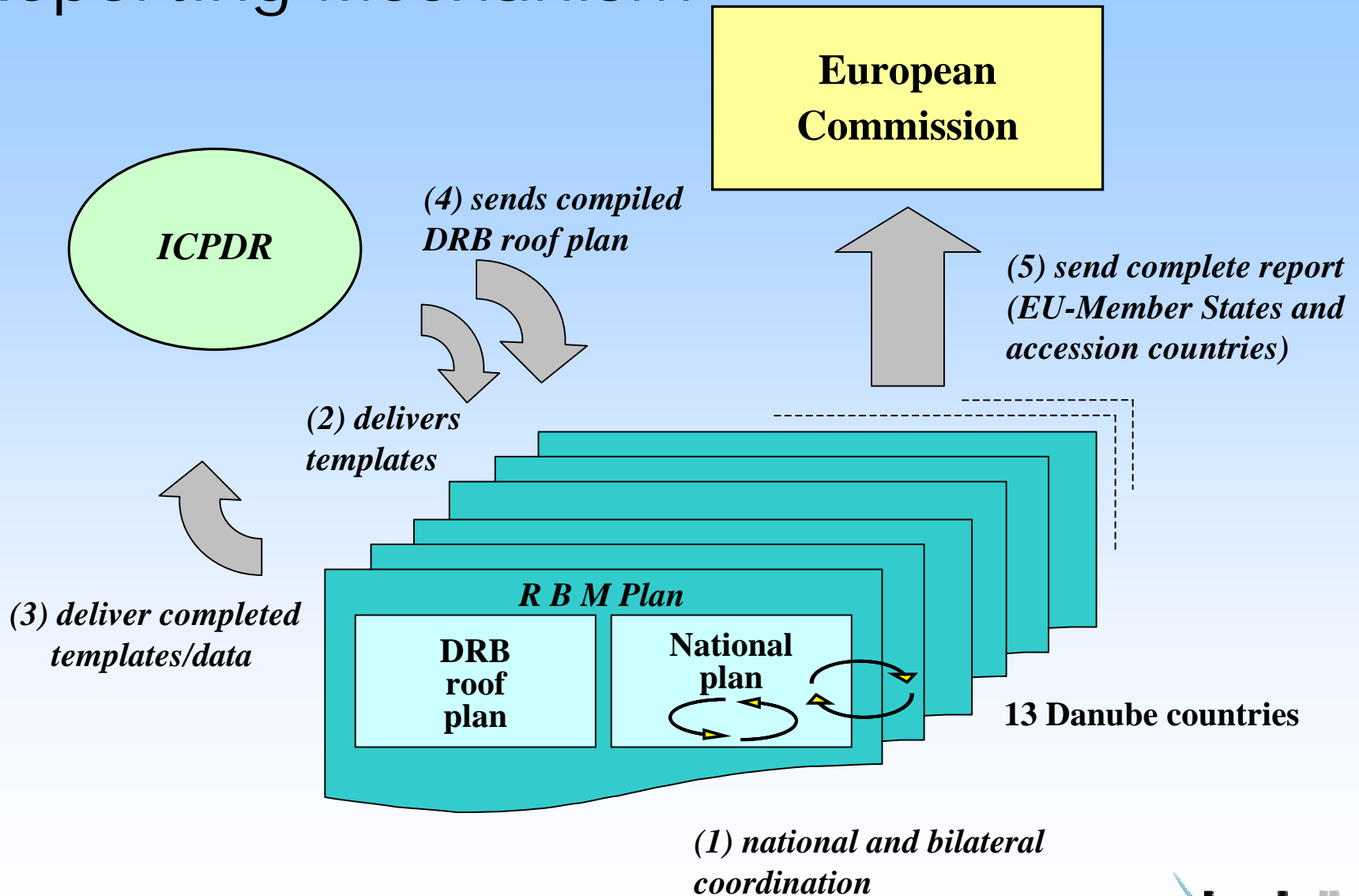
- register of protected areas (species and habitat areas)

Development of the Danube RBM Plan

- implementation phase



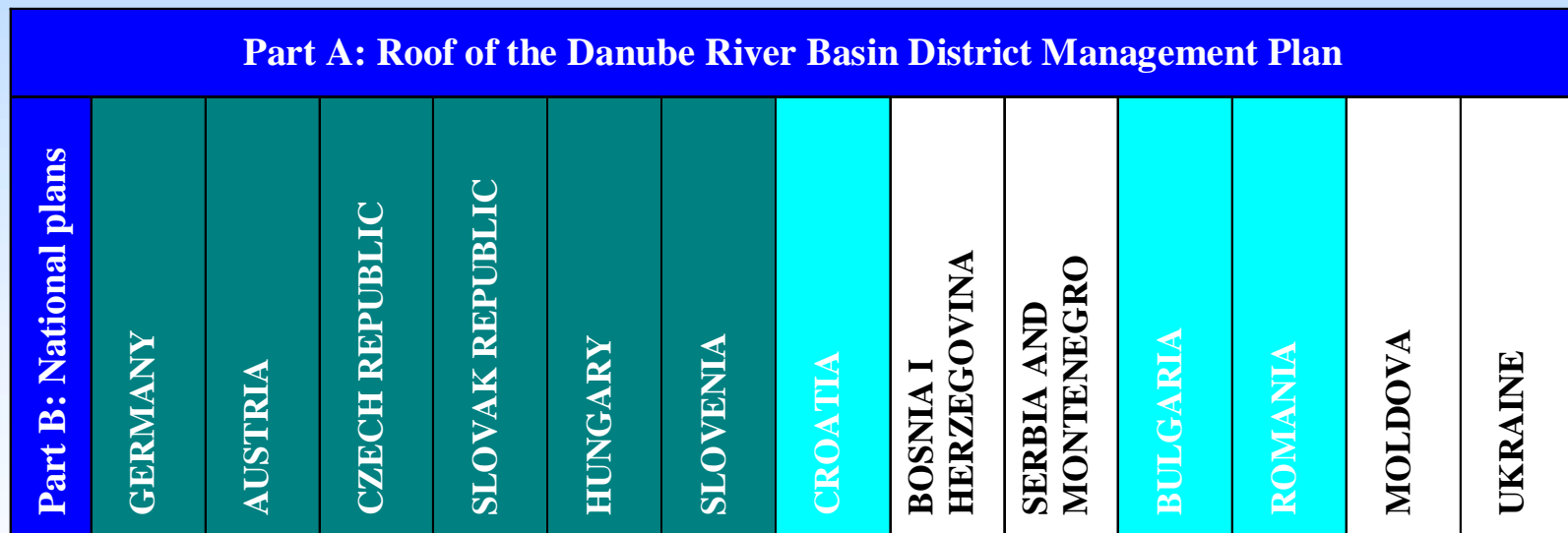
Reporting Mechanism



Structure of the RBM Plan

Part A – Basin-wide overview (Roof level)

Part B – Detailed national plans



 EU-Member States

 EU-Accession countries

 Other countries

Danube River Basin District

Map 1: Overview



Legend

- Danube River Basin District (DRBD)
- Danube
- Tributaries (river basins > 4,000 km²)
- Lakes (surface area > 100 km²)
- Black Sea Coastal Catchments
- Lagoons (surface area > 100 km²)
- Coastal waters
- Canals
- Competent authority
- National borders
- Cities:**
- > 1,000,000 inhabitants
- 250,000 - 1,000,000 inhabitants
- 100,000 - 250,000 inhabitants

This product includes geographical data licensed from European National Mapping Agencies. EuroGlobeMap v1.8 was used as the basic topographic layer for DE, AT, CZ, IT, SI and HR. The data for the other countries is based on VMAP Level 0 data from NEMA. The outer border of the DRBD is based on national information from DE, AT, CH, CZ, SK, SI, HR, BA, CS, BG, RO, UA and MD. For PL, AL, MK and IT the data of the European Commission, Joint Research Centre was used. ©EuroGeographics

Prepared by FLUVIUS, Vienna, November 2004 (version 1)

Danube Basin Analysis Report - WFD Roof report 2004 -

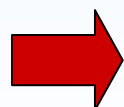
responds to reporting requirements related to

Art. 5, Annex II and III WFD

- river basin characteristics
- impacts of human activities
- economic analysis of water uses

Art. 6 and Annex IV WFD

- inventory for protected areas



Reporting deadline: 22 March 2005

Contents of the report

- The Danube River Basin District and its international coordination arrangements
- Characterisation of surface waters
- Characterisation of groundwaters
- Inventories of protected areas
- Economic analysis
- Public information and consultation
- Key conclusions and outlook

Key objective: to achieve comparable results throughout the basin

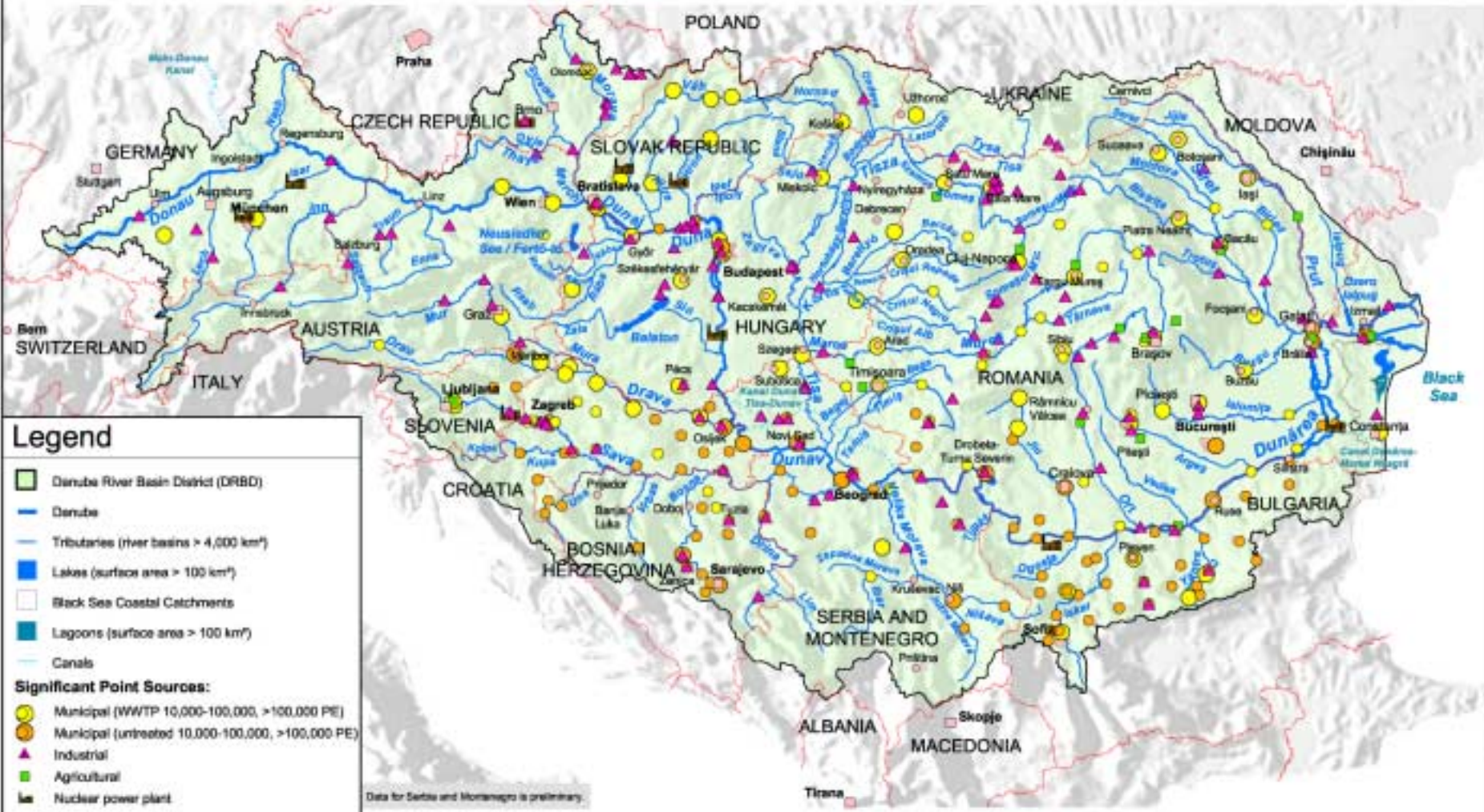
Information used:

- data and information officially delivered by the competent authorities of the Danube countries for the purpose of this report based on agreed criteria,
- published data from basin-wide studies, or
- modelled data (in particular for nutrient emissions) where comparable data was not available

 in agreement with the Danube countries

Danube River Basin District

Map 5: Significant Point Sources of Pollution



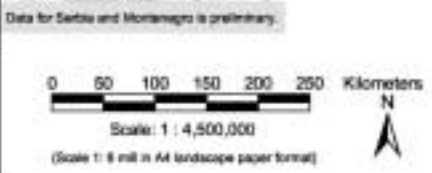
Legend

- Danube River Basin District (DRBD)
- Danube
- Tributaries (river basins > 4,000 km²)
- Lakes (surface area > 100 km²)
- Black Sea Coastal Catchments
- Lagoons (surface area > 100 km²)
- Canals

Significant Point Sources:

- Municipal (WWTP 10,000-100,000, >100,000 PE)
- Municipal (untreated 10,000-100,000, >100,000 PE)
- Industrial
- Agricultural
- Nuclear power plant

- National borders
- Cities:
 - > 1,000,000 inhabitants
 - 250,000 - 1,000,000 inhabitants
 - 100,000 - 250,000 inhabitants

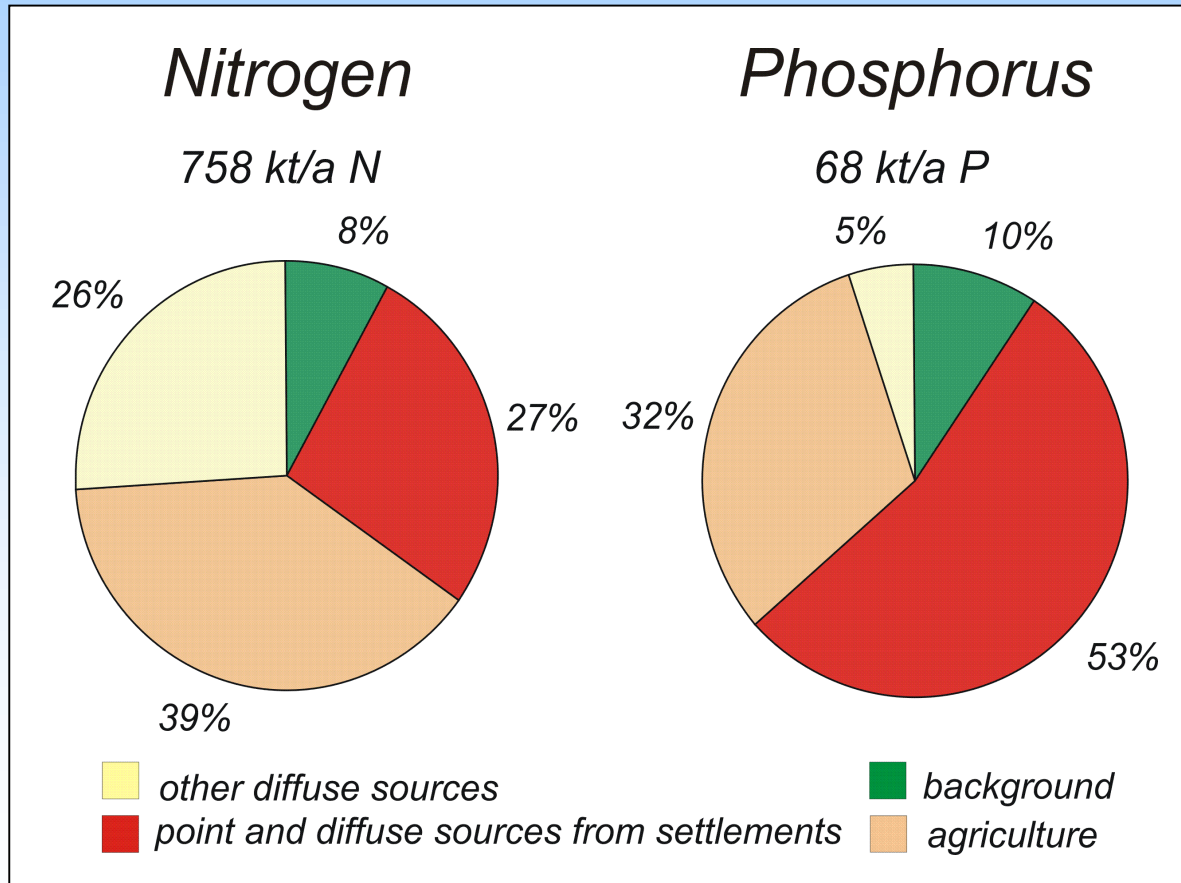


This product includes geographical data licensed from European National Mapping Agencies, EuroGlobalMap v1.0 was used as the basic topographic layer for DE, AT, CZ, IT, SI and HR. The data for the other countries is based on VMAP Level 0 data from MMA. The outer border of the DRBD is based on national information from DE, AT, CH, CZ, SK, SI, HR, BA, CS, BG, RO, UA and MD. For PL, AL, MK and IT the data of the European Commission, Joint Research Centre was used. ©EuroGeographics™

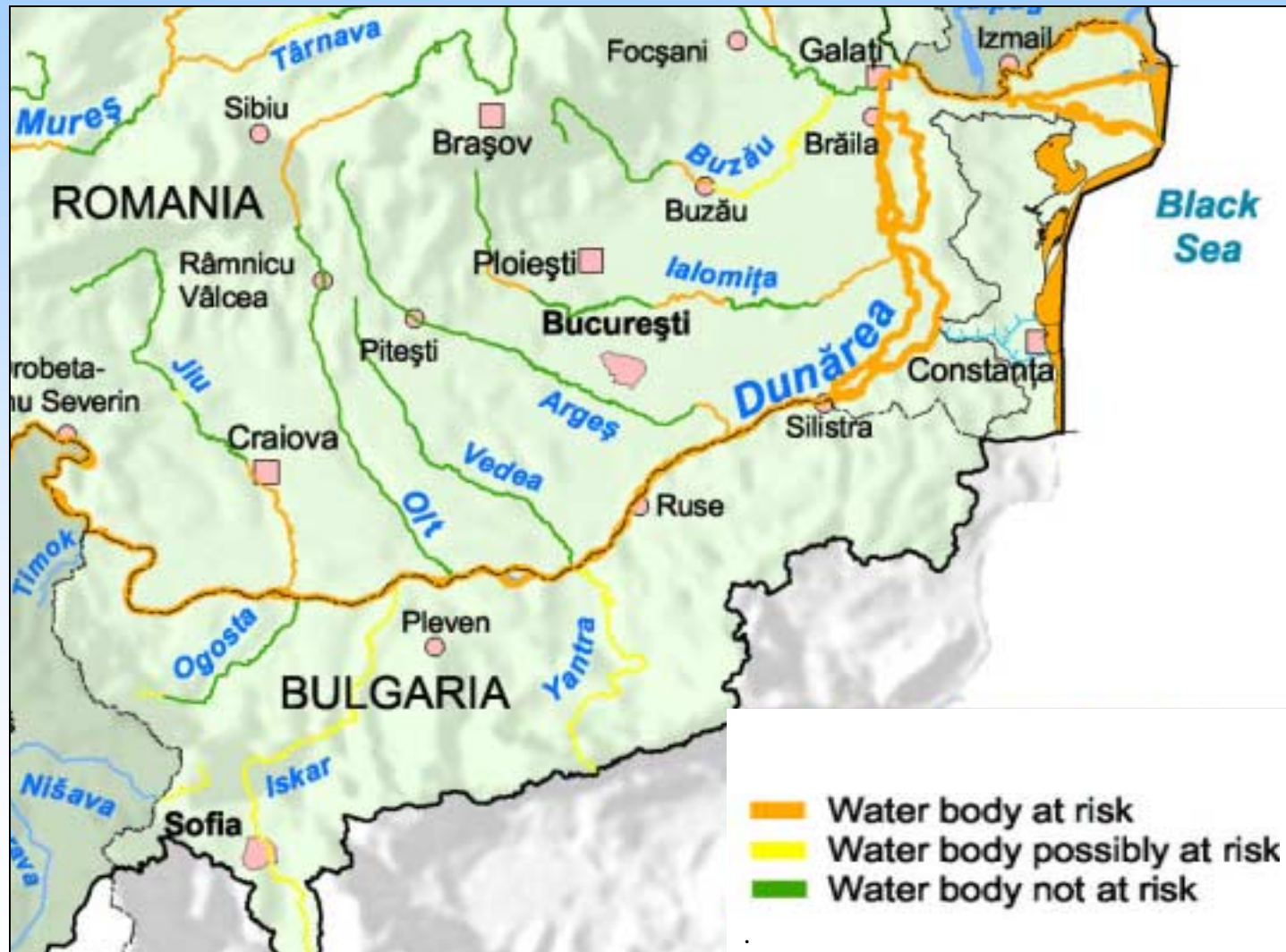
Prepared by FLUVIUS, Vienna, November 2004 (version 1)

Diffuse sources of pollution

Nutrient emissions based on modelling for 1998-2000

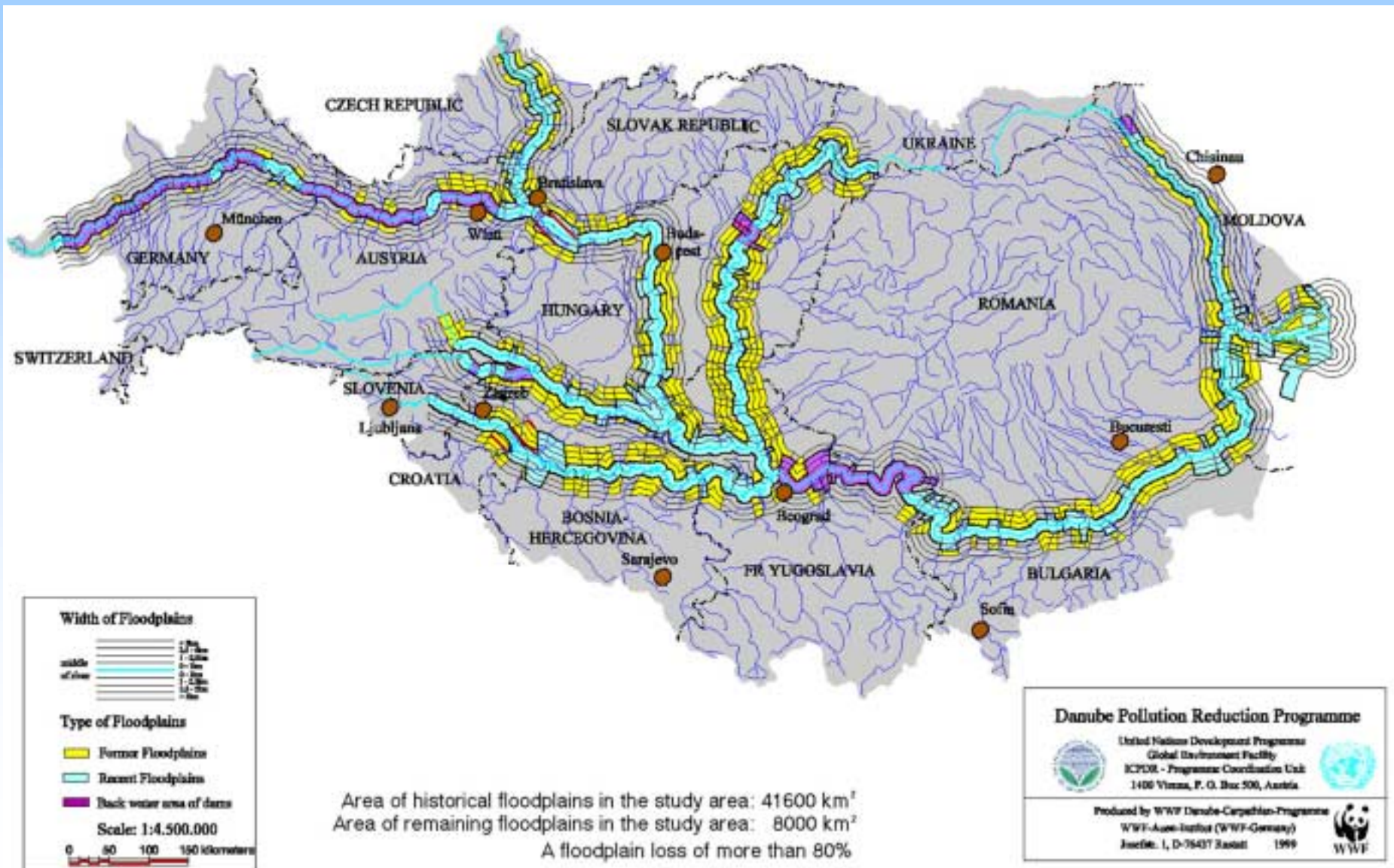


Risk of failure to reach the environmental objectives with regard to nutrients

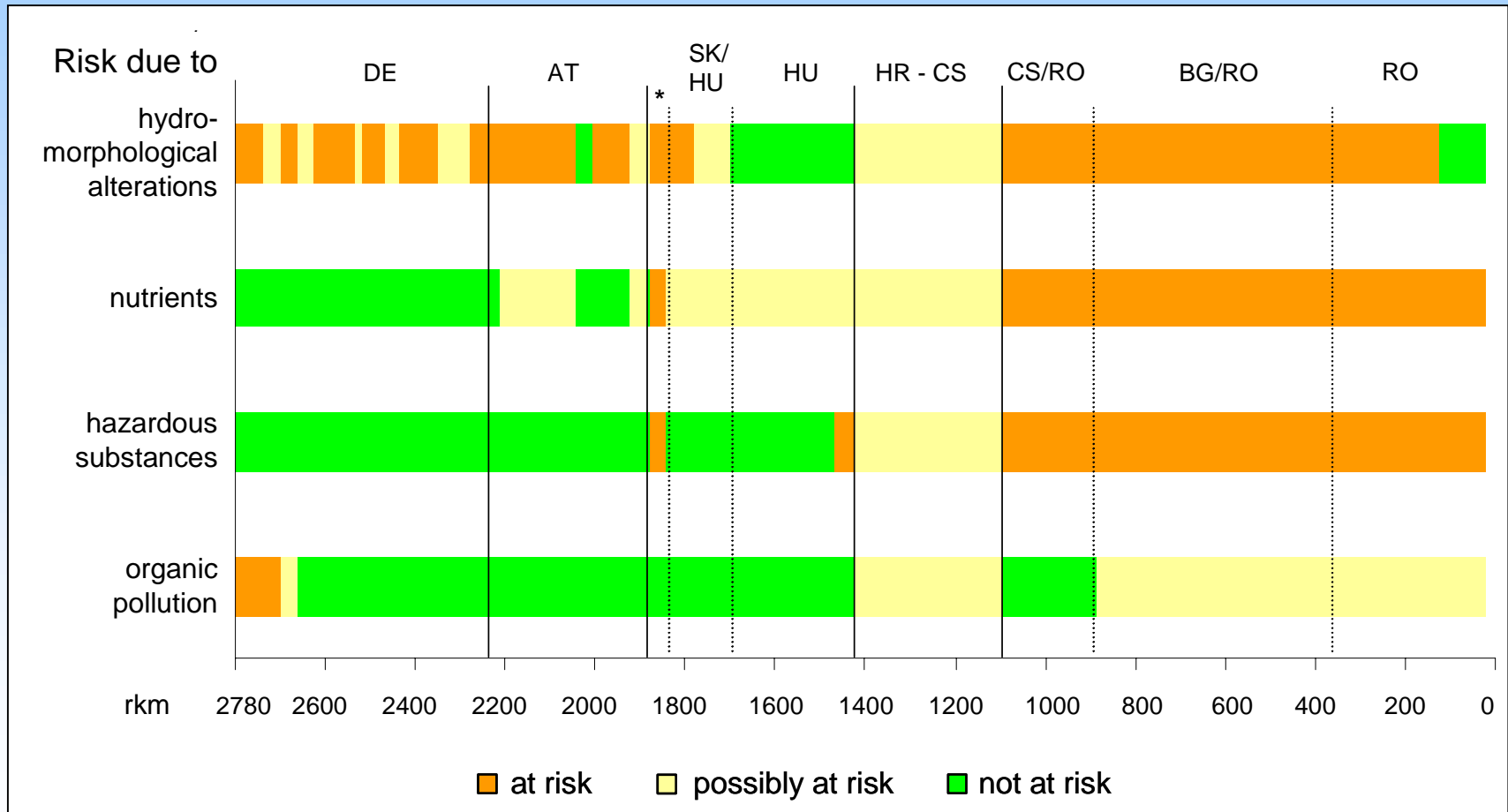


Impacts from hydromorphological alterations

Symbolised view of the loss of floodplains

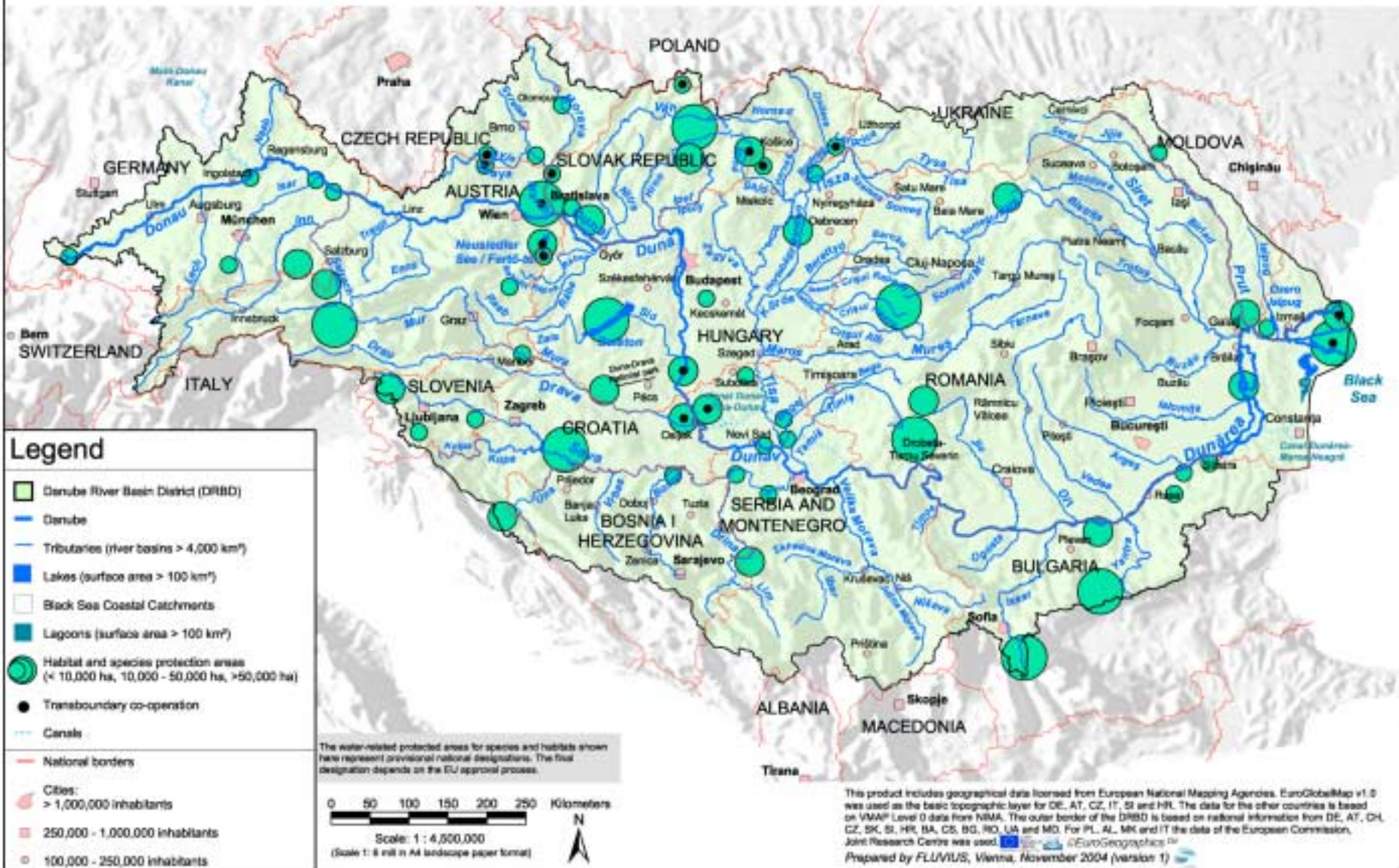


Risk of failure to reach the environmental objectives on the Danube



Danube River Basin District

Map 16: Important Water-related Protected Areas for Species and Habitat Protection



Next steps

Danube Basin Analysis (WFD Roof report 2004)

- was endorsed by the ICPDR at its 7th Ordinary Meeting in December 2004;
- will receive a final revision, thereby correcting obvious factual mistakes, integrating additional data/updating of data not available in October 2004, and final formatting and editing;
- will be submitted to the European Commission by 22 March 2005.

WFD Implementation timetable

- ✓ 2003 - Transposition into national legislation
- ✓ 2003 - Identification of River Basin District
- ✓ 2004 - Analysis of pressures, impacts, water use
- 📄 2006 - Monitoring programmes operational
- 📄 2006 - Start consultation with public
- 📄 2009 - River Basin Management Plan
- 📄 2010 - Pricing policies
- 📄 2012 - Programme of measures operational
- 📄 2015 - Environmental objectives

Prepare Danube RBM Plan

- Fill data gaps by establishing appropriate monitoring programmes
- Further harmonise data where necessary
- Link results of pressure and impact analysis with the economic analysis of water uses
- Prepare programme of measures as the core element of the River Basin Management Plan
- Prepare the public participation process
- Develop RBM Plan
 - drafts by end 2008 to be consulted with the public
 - RBM Plan finalised and published by end 2009

Public Participation

is allowing the public to influence the outcome of plans and working processes.

It IS NOT about:

- everybody joining
- everybody deciding
- always participation
- losing control
- achieving consensus at all costs

It IS about:

- management of expectations
- two-way communication
- tailor-made (no blue print)
- feedback to participants
- no pre-determined outcome

Public Participation Strategy

- to provide guidance to national governments
- to facilitate the establishment of effective structures and mechanisms that will continue operating beyond the first cycle
- to inform other key stakeholders about PP possibilities and structures at the different levels

Levels of PP

- International: Danube River Basin Level (ICPDR)
- Sub-basin level (national or international)
- National level (the key management level)
- Local level (where the WFD actually gets “implemented”)

ICPDR Operational Plan

Phase I (activities in 2004)

- Stakeholder analysis
- WFD Leaflet in English/national languages
- WFD in the ICPDR Info System
- Communication Network
- Public Participation Network
- Danube Day - June 29

Phase II (activities in 2005)

- Step from information to active involvement
- 1st Stakeholder Conference in June 2005



29 June 2004



More than 100 events throughout the Danube basin with very active participation





For more information
please visit www.icpdr.org