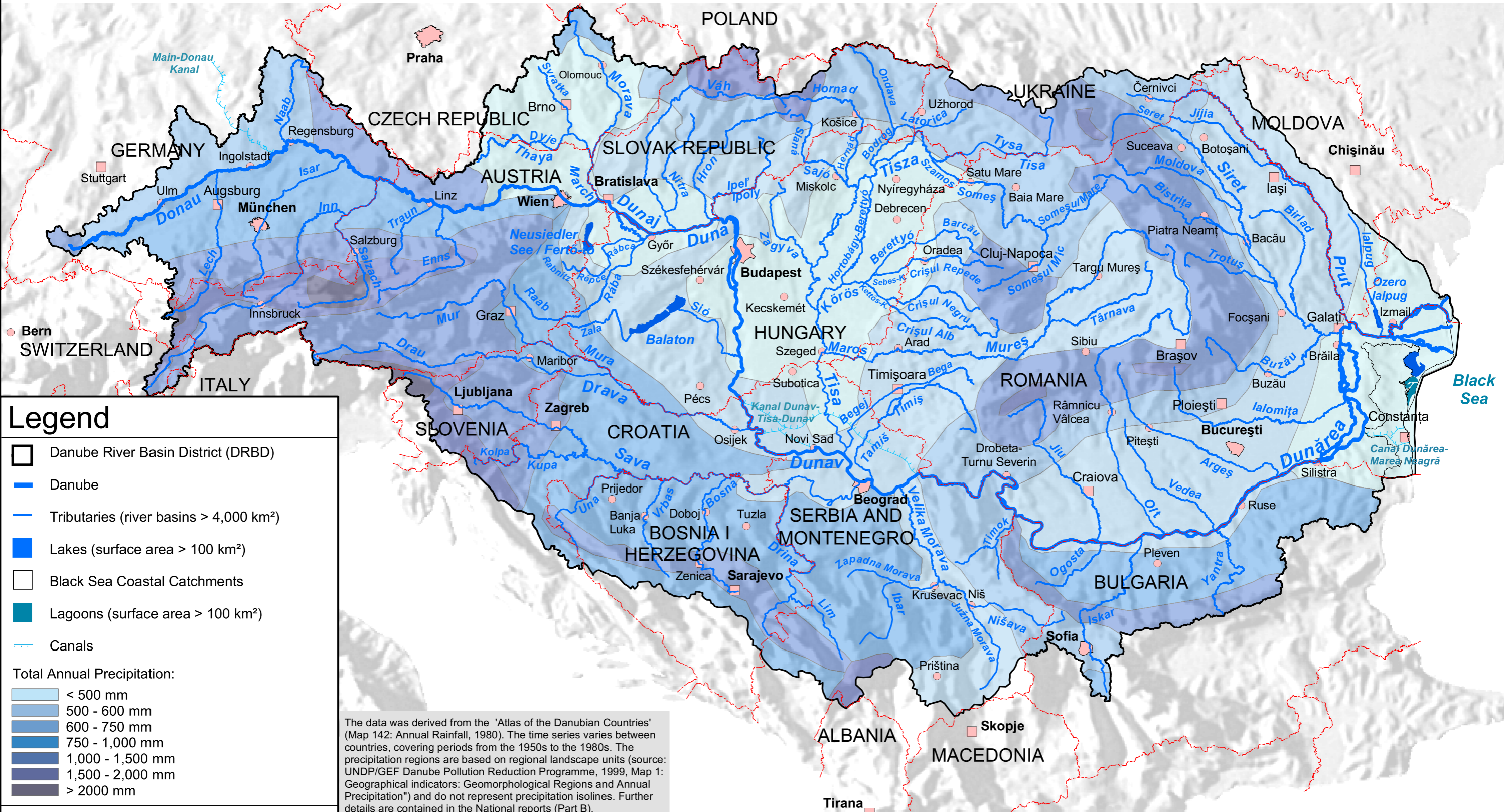


# Danube River Basin District

## Map 3: Annual Precipitation



### Legend

- Danube River Basin District (DRBD)
- Danube
- Tributaries (river basins > 4,000 km<sup>2</sup>)
- Lakes (surface area > 100 km<sup>2</sup>)
- Black Sea Coastal Catchments
- Lagoons (surface area > 100 km<sup>2</sup>)
- Canals

**Total Annual Precipitation:**

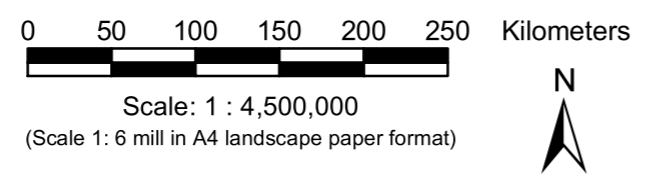
- < 500 mm
- 500 - 600 mm
- 600 - 750 mm
- 750 - 1,000 mm
- 1,000 - 1,500 mm
- 1,500 - 2,000 mm
- > 2000 mm

- National borders

**Cities:**

- > 1,000,000 inhabitants
- 250,000 - 1,000,000 inhabitants
- 100,000 - 250,000 inhabitants

The data was derived from the 'Atlas of the Danubian Countries' (Map 142: Annual Rainfall, 1980). The time series varies between countries, covering periods from the 1950s to the 1980s. The precipitation regions are based on regional landscape units (source: UNDP/GEF Danube Pollution Reduction Programme, 1999, Map 1: Geographical indicators: Geomorphological Regions and Annual Precipitation") and do not represent precipitation isolines. Further details are contained in the National reports (Part B).



This product includes geographical data licensed from European National Mapping Agencies. EuroGlobalMap v1.0 was used as the basic topographic layer for DE, AT, CZ, IT, SI and HR. The data for the other countries is based on VMAP Level 0 data from NIMA. The outer border of the DRBD is based on national information from DE, AT, CH, CZ, SK, SI, HR, BA, CS, BG, RO, UA and MD. For PL, AL, MK and IT the data of the European Commission, Joint Research Centre was used.

Prepared by FLUVIUS, Vienna, March 2005