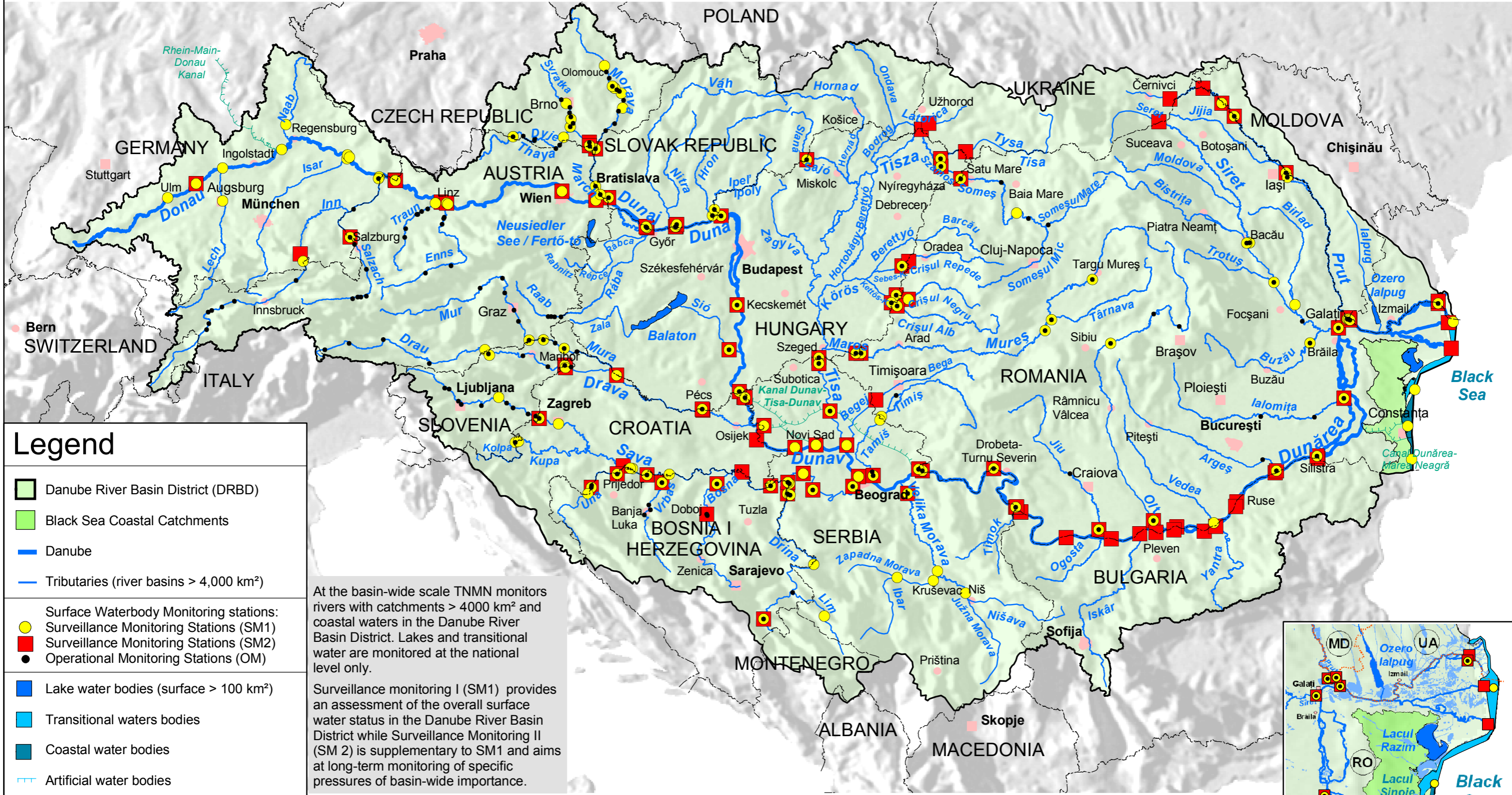


Danube River Basin District

Map 17: Surface Waterbody Monitoring Stations

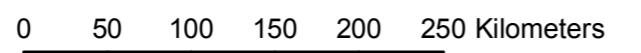


Legend

- Danube River Basin District (DRBD)
 - Black Sea Coastal Catchments
 - Danube
 - Tributaries (river basins > 4,000 km²)
-
- Surface Waterbody Monitoring stations:
- Surveillance Monitoring Stations (SM1)
 - Surveillance Monitoring Stations (SM2)
 - Operational Monitoring Stations (OM)
-
- Lake water bodies (surface > 100 km²)
 - Transitional waters bodies
 - Coastal water bodies
 - Artificial water bodies
-
- National borders
-
- Cities:
- > 1,000,000 inhabitants
 - 250,000 - 1,000,000 inhabitants
 - 100,000 - 250,000 inhabitants

At the basin-wide scale TNMN monitors rivers with catchments > 4000 km² and coastal waters in the Danube River Basin District. Lakes and transitional water are monitored at the national level only.

Surveillance monitoring I (SM1) provides an assessment of the overall surface water status in the Danube River Basin District while Surveillance Monitoring II (SM 2) is supplementary to SM1 and aims at long-term monitoring of specific pressures of basin-wide importance.



Scale: 1 : 4,500,000

(Scale 1: 6 mill in A4 landscape paper format)



This product includes geographic data licensed from European National Mapping Agencies. EuroGlobalMap v1.0 was used as the basic geographical layer for DE, AT, CZ, IT, SI and HR. The data for the other countries is based on VMAP Level 0 data from NIMA. The outer border of the DRBD is based on national information from DE, AT, CH, CZ, SK, SI, HR, BA, RS, BG, RO, UA and MD. For PL, AL, MK and IT the data of the European Commission, Joint Research Centre was used.



Prepared by FLUVIUS, Vienna, February 2007

